



UTGS TAILGATE SANDER



UTGS TAILGATE SANDER

Key Features:

- Stainless Steel Construction
- End Plates are 1/4" – 14" tall
- 9" continuous flight auger (available in 6" or 4" pitch)
- Seal savers on both auger and spinner motors
- Works with 96" wide bodies
- Full 270 degree opening cover plate for easy access
- Direct drive
- Self-leveling 18" Poly spinner
- Available in Left, Right, and Dual Discharge

HEIGHT (W/SPINNER)	43"
HEIGHT (W/OUT SPINNER)	27.75"
WIDTH (W/SPINNER)	20"
WIDTH (W/OUT SPINNER)	20"
OVERALL LENGTH (APPROX.)	96.0"
UNIT WEIGHT (APPROX.)	600 LBS.
SPINNER DIAMETER	18.0"
SPINNER RPM	550 MAX.
TROUGH MATERIAL	7-GA
END PLATES	.25"

* 4" flight auger option shown



AUGER

AUGER

The 3/8" thick heavy-duty auger flighting is welded to a 2-7/8" O.D. Schedule 40 pipe. Auger is supported by a 1-1/2" diameter shaft with provisions for speed sensor attachment. Flighting is continuous and available in 6" and 4" flight pitch Auger shaft utilizes a polyurethane bushing at each end to eliminate seizing and aid in maintenance. Auger motor has seal saver on the shaft for additional corrosion protection. Anti-flow plate is provided to prevent loss of free flowing material while auger is stopped.



TROUGH

TROUGH

Seven (7) gauge trough and rear panel, 1/4" end plates with all seams continuous welded. Clean out door opens to the rear with lock to hold in raised position, providing easy access to the auger. 5 hinge points and 3 door latches ensure door stays securely in place. Spinner stays in place while door is open. Safety interrupt has been built-in, shutting down hydraulic flow to the auger while door is open. No tools required for opening the clean out door. Overall length of trough is 96" to fit most dump bodies. Spreader does not interfere with normal operation of dump body and tailgate.



TROUGH BRACING

TROUGH BRACING

Trough bracing with built-in channels as well as end plate holes allow easy routing of hoses and wires without the need for additional brackets.



SPINNER ASSEMBLY

SPINNER ASSEMBLY

Polyurethane spinner disk is 18" in diameter with six formed fins. Spinner assembly is directly driven by a high torque 2.8 C.I.R. hydraulic motor. The motor is mounted beneath the spinner. Spinner assembly is self-leveling and mounted under the auger trough. Adjustment for variation of spread pattern can be made by adjusting hair pin clips on mounting shaft. Vertical adjustment of spinner allows for proper fit with different size chassis/ dump bodies. A stationary shield in front of the spinner protects the undercarriage from thrown material.



OPERATION PROTECTION

OPERATION PROTECTION

When the top cover or bottom trough are opened, the Hydraulic Safety Interrupt stops the flow of hydraulic fluid to the auger motor. Interruption of hydraulic fluid immediately stops the auger. Mounted flat face couplers make the safety interrupt quick and easy to use.



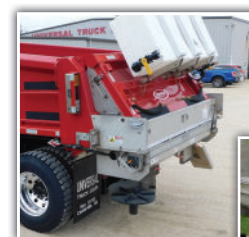
SEAL SAVERS

SEAL SAVERS

Both Auger and Spinner motors are equipped with seal savers (standard) to keep contaminants from corroding the shaft. Resulting in less leaks and longer motor life.

Options:

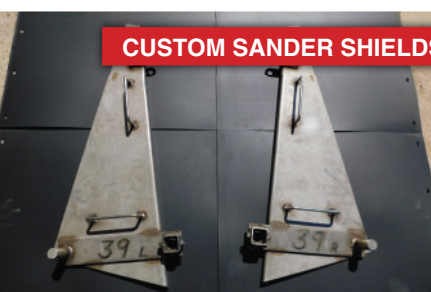
- Dual Spinners
- 6" extended trough for asphalt body applications
- Berm Chute for shouldering
- 4" and 6" auger flight spacing
- Unit ID numbers welded to sander
- Standard Bolt-on Sander Spill Shields; 10GA Stainless Steel
- Custom Sander Shields (UTE in-house installation only)



Extended trough and Custom sander shield options shown.



Berm chute option shown. Can be used for left or right discharge.



CUSTOM SANDER SHIELDS

CUSTOM SANDER SHIELDS

Custom sander shields are a very popular option for tailgate sanders installed at Universal. The shields hold the tailgate open in the optimum position to feed granular material to the auger and keep spillage to a minimum. They are quickly and easily removed or installed. Contact your UTE sales representative for more information.

A short video overview of features and operations is available on YouTube.

<https://youtu.be/ukqBu7Njyvc>