



**UTA
POWER REVERSIBLE SNOW PLOW
PARTS MANUAL**

MODEL: UTA

SERIAL #: _____

INSTRUCTIONS FOR ORDERING PARTS

Always give the model & serial number.

To obtain parts promptly, give part number & description.

Please specify whether parts will be picked up or shipped by freight, parcel post, or United Parcel Service. Give complete address for shipping.

Inspect all goods received immediately upon receipt. Shortages or errors need to be reported immediately. Damaged product needs to be documented on delivery freight bill. Damage may be the responsibility of the transportation company. No responsibility is assumed for delay or damage to merchandise while in transit.

Universal Truck Equipment, Inc.

Hwy 54/93 - N15921 Schubert Rd Galesville, WI 54630

Phone 608-539-4600

www.universaltruckequipment.com

UNIVERSAL TRUCK EQUIPMENT

Introduction

The process of snow removal may be a hazardous duty. Removing the effects of a winter storm in the midst of traffic & physical hazards is a job that requires highly skilled operators who must be alert to their surroundings and familiar with their equipment. Snow removal equipment, in spite of its heavy-duty construction, is susceptible to damage. This damage may seriously affect the equipment's operating safety and efficiency. Snow removal equipment must be cared for and maintained regularly. Daily maintenance and inspection of equipment is a MUST.

Snow removal equipment shouldn't be subjected to uses for which it was not designed. Physical hazards must be avoided. Obstructions may cause damage to snow plow or snow wing. Tripping devices & shear pins are designed to minimize the damages, not to prevent them.

IN SEASON MAINTENANCE

*Snow removal equipment must be cared for and maintained regularly. Daily or pre-route inspection and maintenance are necessary. Failure to do so may affect efficiency and safety.

*A visual inspection must be carried out after every eight hours of operation. Look for damaged components, bends, cracked welds or hydraulic leaks. Repair immediately. It is recommended to re-torque all bolts after the first eight hours of use and to regularly check for loosened or missing fasteners. Replace any damaged fasteners immediately.

*Because of the environment in which snow equipment is expected to operate, hydraulic lines, fasteners, wearable or replaceable items may become damaged by snow, ice, and road debris. These items must be inspected daily and replaced if necessary to avoid equipment damage or personal injury.

*Lubrication of moving parts is of the utmost importance. Exposure to snow, ice, salt, and road debris will wash away lubrication quickly and it may be necessary to inspect and reapply lubrication more than once a day.

OFF SEASON MAINTENANCE

*Thoroughly inspect equipment for any defects or worn parts that can be replaced or fixed during the off-season.

*Care should be taken not to mix or misplace bolts and hardware when equipment is removed during the off-season. Be sure to replace any fasteners with damaged threads.

*All hydraulic cylinders should be fully retracted when stored, if possible, during off-season to prevent damage, corrosion, or contamination. Remaining exposed shaft surface is to be coated with a moisture displacement, such as thick grease, which should be removed before returning to regular service.



*When disconnecting hydraulic lines, valves and so forth to insure that dirt and other forms of contamination do not enter the systems. Use caps for covering hydraulic hose fittings and install in hydraulic ports.

COMPLETE WARRANTY PROVISIONS

PARTS REPLACEMENT AND REPAIR:

Universal Truck Equipment, Inc. warrants its manufactured products to be free from defects in material or workmanship for a period of one-year. This warranty of our products under normal use and service is limited to replacement and repair at our facility, of any parts returned and after our examination were found to be defective. Expendable items are excluded from this warranty.

EXCLUSIONS:

*This warranty is expressly limited to parts replacement and repair, and is not transferable. Any expressed warranty not herein provided, and any remedy for breach of contract is excluded and disclaimed. The implied warranties of parts and repairs for any particular purpose are limited to one year from delivery to original user.

*Any component or parts manufactured by others will carry that manufacturer's warranty, and in no case will Universal Truck Equipment be liable, either expressed or implied, for warranties in excess of those made by the original manufacturer.

*Under no circumstances will Universal Truck Equipment be liable to purchaser, or any other person, for any incidental or consequential damages. The user assumes liability for all personal injury or property damage resulting from handling, possession, or use of this product.

*Repairs or modifications done by others, or parts from other sources outside the Universal Truck Equipment are not covered by this warranty.

WARRANTY PROCEDURE

Prior authorization by Universal Truck Equipment must be obtained for all warranty work.

Contact Universal Truck Equipment giving complete details of your request, the unit involved, including serial number, date purchased and the nature of or reason for the claim. All defective parts that Universal Truck Equipment has requested must be returned within 30 days. If not returned within 30 days any/all warranty will be cancelled and void.

When parts are shipped on a warranty request, you may be required to return the defective parts for inspection by Universal Truck Equipment or the original manufacturer. In this case, you will be issued a RAN (return authorization number) for your return and you will be invoiced for shipment of new components until the old unit is returned and inspected by Universal Truck Equipment or the original manufacturer. Payment on warranty pending invoice will need to be paid on regular 30-day net terms. If parts need to be sent out for inspection this can delay the processing of the claim. If any labor is involved it must be approved by Universal Truck Equipment.

***Persons who install, mount, operate, or service this equipment must be properly instructed and warned. Do not let anyone operate equipment without instruction.

***Unauthorized modifications to the snowplow and related components may impair the function and/or safety.





SAFETY INFORMATION

This symbol means **ATTENTION!**

Please read and understand completely before operating!

Improper use of this equipment can result in serious injury.

PREPARATION

Know your controls. Read this instruction manual. Learn how to stop the equipment quickly in an emergency.

Do not allow children to operate machine; nor adults to operate it without proper instructions.

Keep all individuals not involved in use of the equipment a safe distance away.

OPERATION

Observe and shut off all equipment controls before starting engine so equipment will not unintentionally operate with engine is started.

Always check area around machine before engaging or operating controls.

Always wear relatively tight and belted clothing when operating equipment. Loose jacket, shirts, sleeves or other loose clothing should not be worn because of the danger of catching them in moving parts for controls.

Stop and inspect equipment if unusual movement sounds or noises are observed. Repair damage before restarting and operating the equipment.

Disengage power to all operating equipment: (1) before leaving operator's position, (2) before making any repairs, adjustments, or cleaning, or (3) when not in use.

Take all possible precautions when leaving the equipment unattended; such as disengaging the hydraulic system from the vehicle engine, shifting vehicle out of gear, setting parking brake, shutting off engine and removing key.

NOTICE:

It is the responsibility of the owner of this equipment to replace any or all safety decals which become unreadable or otherwise defaced, and to apply the new decals to the equipment in a secure manner in the same location as the old decals.

Read and observe all safety decals appearing on equipment.

The following safety decals appear in various locations on your equipment. Refer to this manual for location of safety decals on your equipment.

THE SAFETY-ALERT SYMBOL

This symbol is on safety signs on the equipment and in the manual.
This symbol indicates to you the potential for personal injury
and/or property damage.



HAZARD LEVELS

The **DANGER** signal word indicates - immediate hazards which WILL result in severe personal injury or death.



The **WARNING** signal word indicates - hazards or unsafe practices which COULD result in severe personal injury or death.



The **CAUTION** signal word indicates - hazards or unsafe practices which COULD result in a minor personal injury or product or property damage



SAFETY INFORMATION FOR OPERATION OF SNOW PLOWS



Person who install, operate, or service this equipment must be instructed and warned regarding the proper use of this equipment.



Read the operator's manual and safety decals completely before operating the equipment and observe these messages during use or maintenance.



Stop the spreader and turn off the power before leaving the truck.



Check the unit regularly to insure that all covers and shields are in place, and safety decals are in place and readable. Replace any missing or damaged safety shields or decals.



Observe instructions and cautions for dump body use as indicated in the dump body operator's manual, especially being sure to set the body prop before starting any service or maintenance to hoist or underbody area.



Lower the snow plow when the vehicle is parked. The snow plow could drop unexpectedly, causing bodily harm or injuries.



Clear the area around the snow plow while operating or servicing the snow plow.





A loaded body will descend more rapidly than an empty one. So when lowering the hoist with a loaded body, use care to slowly, and only slightly, open the valve to control the descent.



Use low speed, not exceeding 20-25 mph, during highway spreading, and reduce speed on curves or turns, especially when the hoist is partially raised.



Whenever the hoist is partially raised during highway spreading, reduce speed on curves or turns, especially when the hoist is partially raised.



Whenever the hoist is partially raised during highway spreading, use special care to anticipate road conditions, curves, stops, turns, or obstructions such as trees, power lines, overpasses, etc., which could contribute to damaging, or potentially overturning the vehicle.



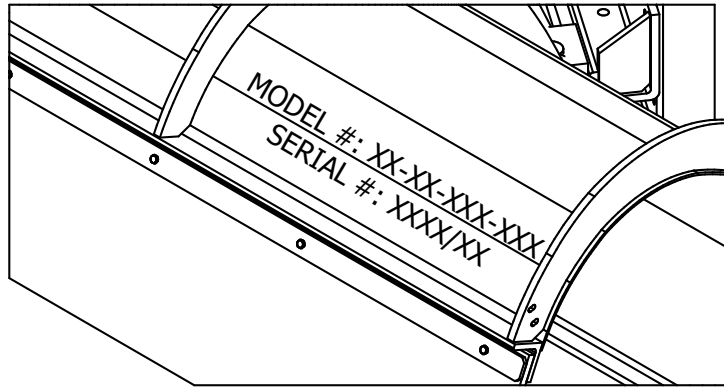
Be sure the body is lowered onto the frame when leaving the road, or when driving off-road.



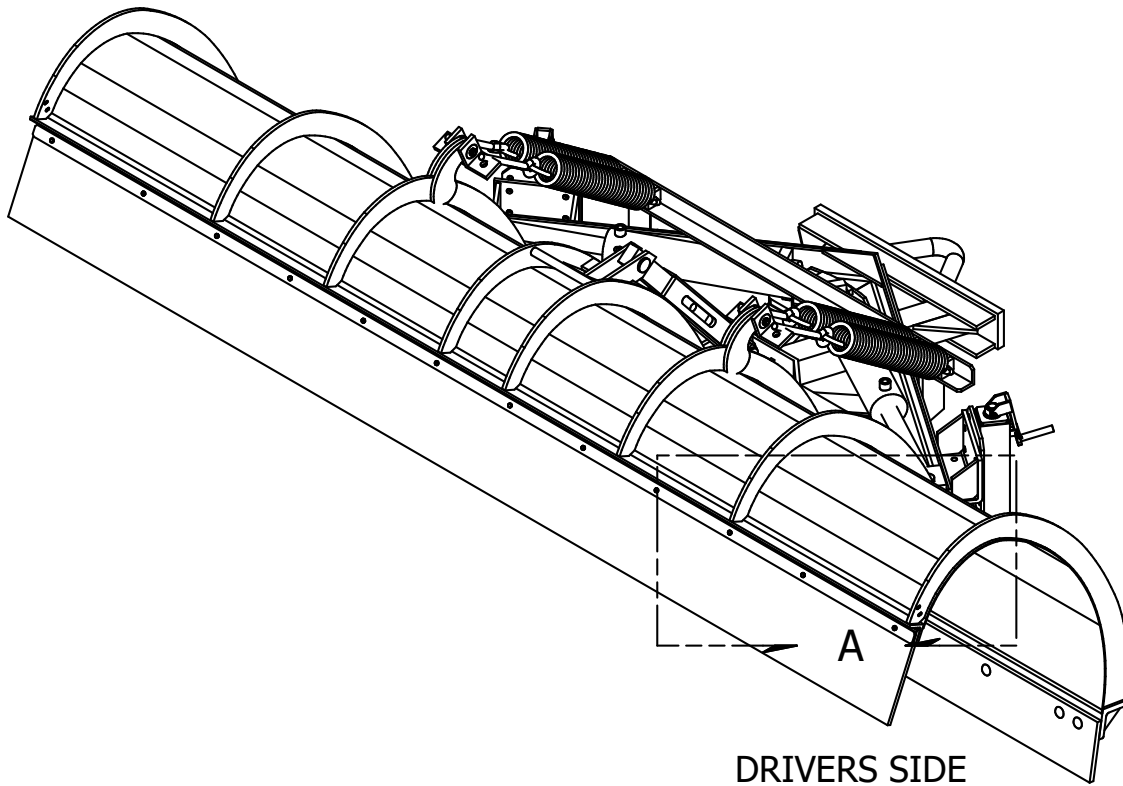
Always wear your seatbelt when operating a truck.



**UNIVERSAL PLOW
MODEL & SERIAL
NUMBER LOCATION
(ALL MODELS)**



DETAIL A



DRIVERS SIDE

UNIVERSAL TRUCK EQUIPMENT			
UTA POWER REVERSE PLOW COMPLETE PLOW ASSEMBLY			
PART NUMBER: UTA PLOW			
DATE	DRAWN BY	REVISED	REV
10/20/21	RRH		
FILE NAME D:\DRAWINGS\UTA			



2



1

PARTS LIST

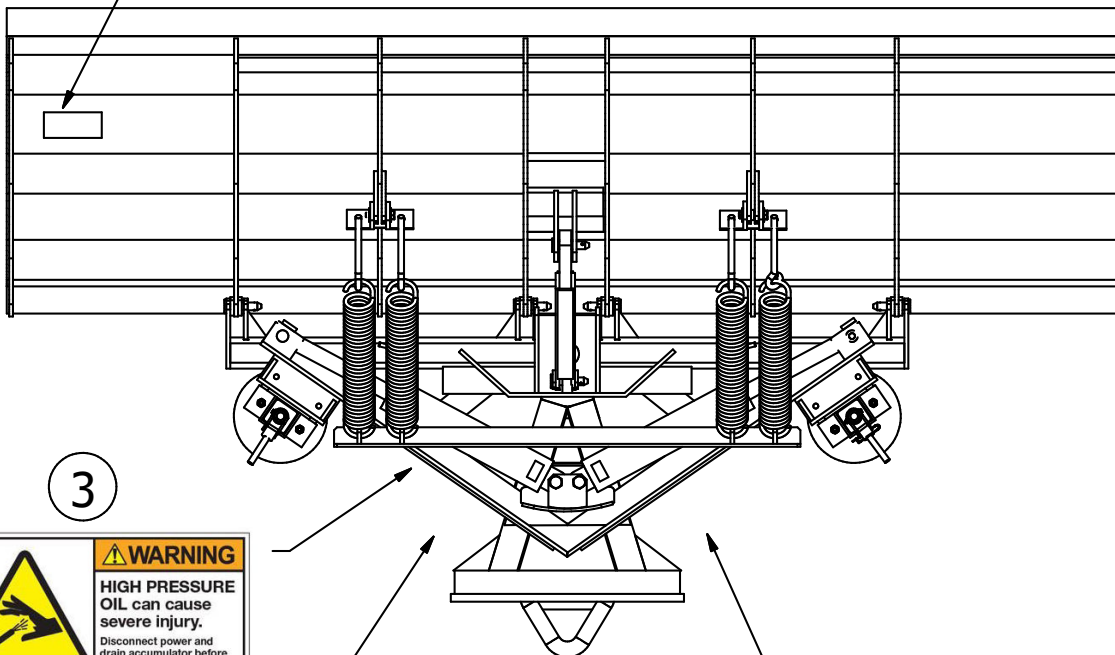
ITEM	QTY	PART NUMBER	DESCRIPTION
1	1	STICKER136	WARNING - CRUSH HAZARD
2	2	STICKER112	DANGER - PINCH POINT
3	1	STICKER134	WARNING - HIGH PRESSURE OIL

1



B

B



3



2



A

A

UNIVERSAL TRUCK EQUIPMENT

UTA POWER REVERSE PLOW
PLOW ASSEMBLY

PART NUMBER: UTA PLOW

DATE	DRAWN BY	REVISED	REV
11/30/21	RRH		

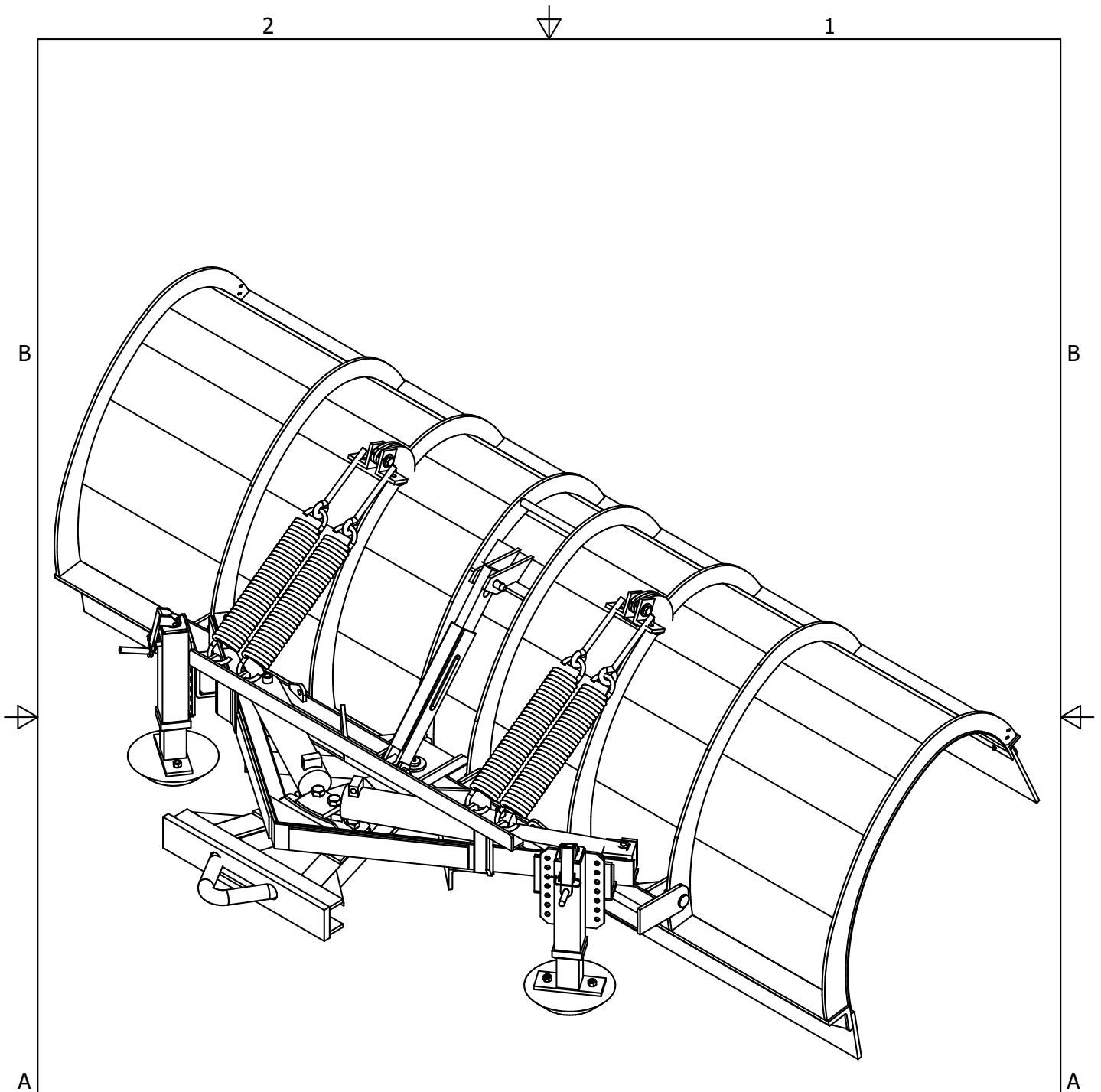
FILE NAME D:\DRAWINGS\UTA

2



1





UNIVERSAL TRUCK EQUIPMENT			
UTA POWER REVERSE PLOW COMPLETE PLOW ASSEMBLY			
PART NUMBER: UTA PLOW			
DATE	DRAWN BY	REVISED	REV
08/19/21	RRH		
FILE NAME D:\DRAWINGS\UTA			



2



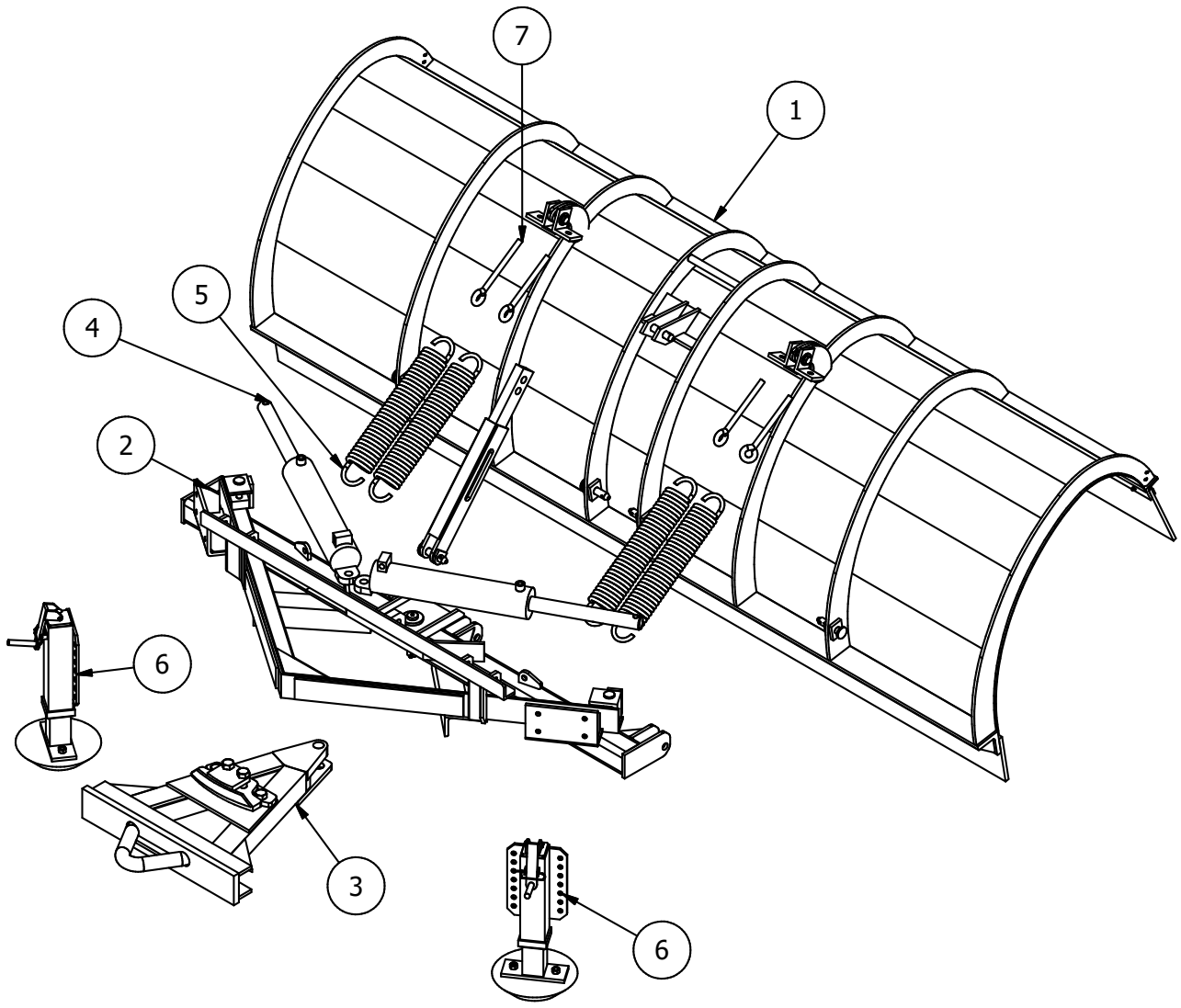
1

PARTS LIST

ITEM	QTY	PART NUMBER	DESCRIPTION
1	1		UTA Moldboard Assembly
2	1	UTA-303	Standard Pushframe Assembly
3	1	UTA-304L	Pin & Loop A-Frame Assembly
4	1	UTA-307	Reverse Cylinder
5	4	UTA-308	Extension Spring
6	2	U1200A	Adjustable Shoe Assembly (Optional)
7	4	UTA-325	Eye Bolt 3/4" w/ 2 Nuts

B

B



A

A

UNIVERSAL TRUCK EQUIPMENT

UTA POWER REVERSE PLOW
COMPLETE PLOW ASSEMBLY

PART NUMBER: UTA PLOW

DATE	DRAWN BY	REVISED	REV
08/20/21	RRH		

FILE NAME D:\DRAWINGS\UTA

2



1



2



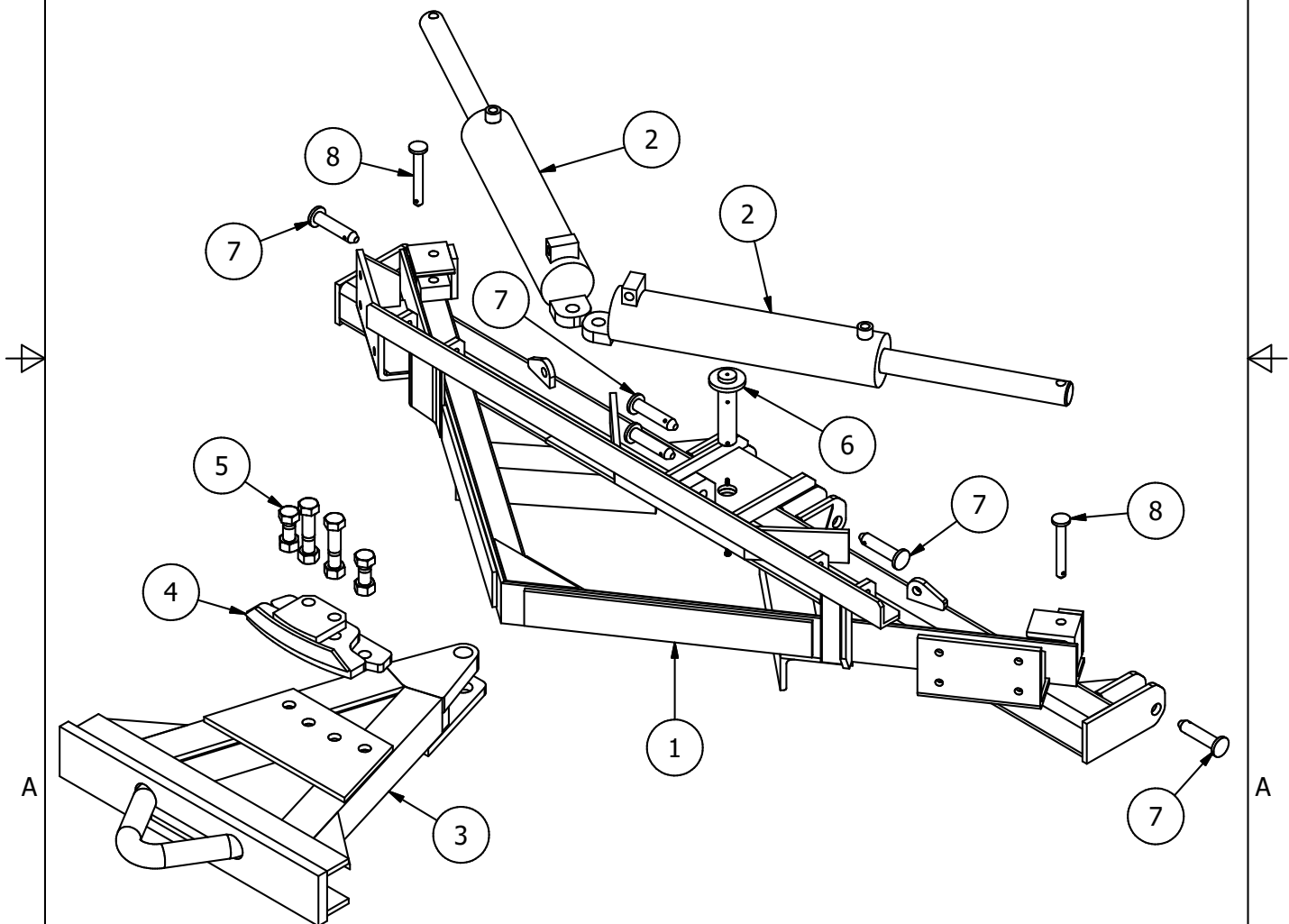
1

PARTS LIST

ITEM	QTY	PART NUMBER	DESCRIPTION
1	1	UTA-303	Standard Push Frame Assembly
2	2	UTA-307	Swing Cylinder w/ DE Bolt & Nut
3	1	UTA-304L	Pin & Loop A-Frame Assembly
4	1	UTA-311	Trunion Assembly
5	1	UTA-310	Bolt Kit Assembly
6	1	U4014A	PIN $\varnothing 1\text{-}1/2\text{"}\times 6\text{"}$ w/ GREASE ZERK
7	5	U4002A	Pin $\varnothing 1\text{"}\times 3\text{-}5/8\text{"}$ w/ CP
8	2	U4013A	Pin $\varnothing 3/4\text{"}\times 5\text{"}$ w/ CP

B

B



A

A

UNIVERSAL TRUCK EQUIPMENT

UTA POWER REVERSE PLOW
 PUSH FRAME & A-FRAME ASSEMBLY

PART NUMBER: UTA PLOW

DATE	DRAWN BY	REVISED	REV
08/20/21	RRH		

FILE NAME D:\DRAWINGS\UTA

2



1



2

1

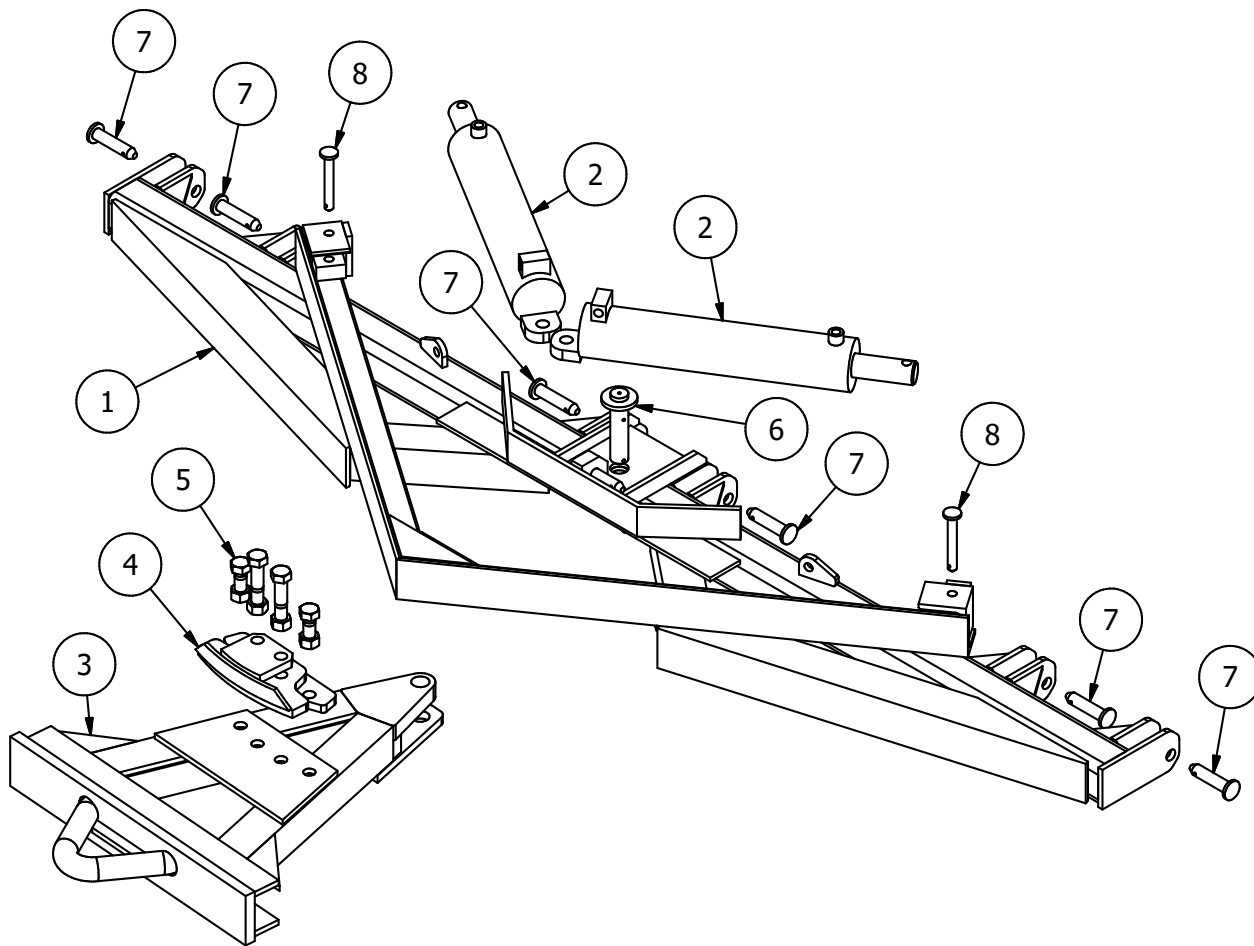


PARTS LIST

ITEM	QTY	PART NUMBER	DESCRIPTION
1	1	UTA-303HD	Heavy Duty Push Frame
2	2	UTA-307	Swing Cylinder w/ DE Bolt & Nut
3	1	UTA-304L	Pin & Loop A-Frame Assembly
4	1	UTA-311	Trunion Assembly
5	1	UTA-310	Bolt Kit Assembly
6	1	U4014A	PIN \varnothing 1-1/2"x6" w/ GREASE ZERK
7	7	U4002A	Pin \varnothing 1"x3-5/8" w/ CP
8	2	U4013A	Pin \varnothing 3/4"x5" w/ CP

B

B



A

A

2

1



UNIVERSAL TRUCK EQUIPMENT

UTA POWER REVERSE PLOW
HD PUSH FRAME & A-FRAME ASSEMBLY

PART NUMBER: UTA PLOW

DATE	DRAWN BY	REVISED	REV
08/20/21	RRH		

FILE NAME D:\DRAWINGS\UTA



2



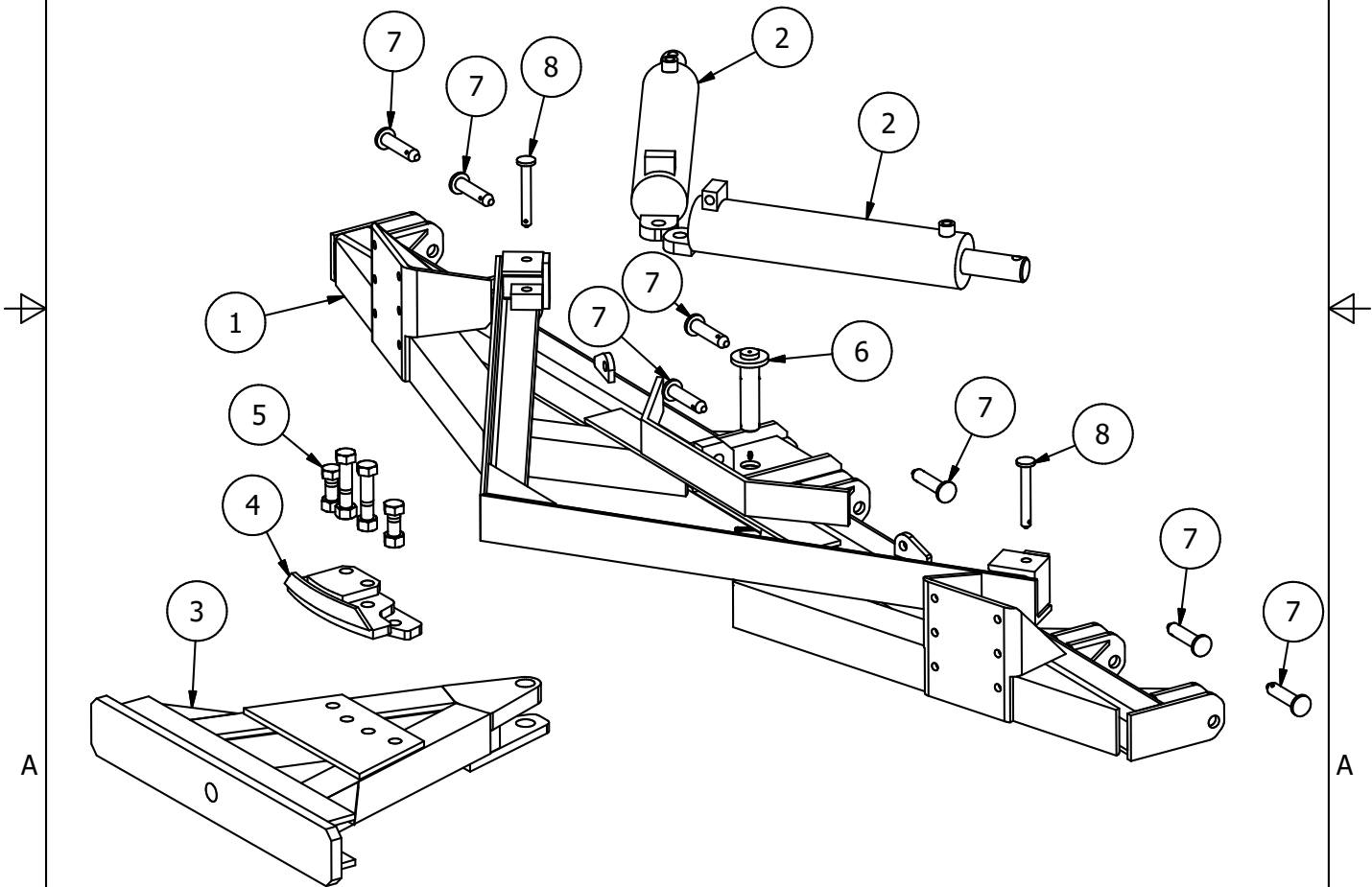
1

PARTS LIST

ITEM	QTY	PART NUMBER	DESCRIPTION
1	1	UTA-303HD	Heavy Duty Push Frame
2	2	UTA-307	Swing Cylinder w/ DE Bolt & Nut
3	1	UTA-304-SL	Snap-Link A-Frame Assembly
4	1	UTA-311	Trunion Assembly
5	1	UTA-310	Bolt Kit Assembly
6	1	U4014A	PIN \varnothing 1-1/2"x6" w/ GREASE ZERK
7	7	U4002A	Pin \varnothing 1"x3-5/8" w/ CP
8	2	U4013A	Pin \varnothing 3/4"x5" w/ CP

B

B



A

A

UNIVERSAL TRUCK EQUIPMENT

UTA POWER REVERSE PLOW
HD PUSH FRAME & SNAP-LINK A-FRAME ASY.

PART NUMBER: UTA PLOW

DATE	DRAWN BY	REVISED	REV
08/20/21	RRH		

FILE NAME D:\DRAWINGS\UTA

2



1



2



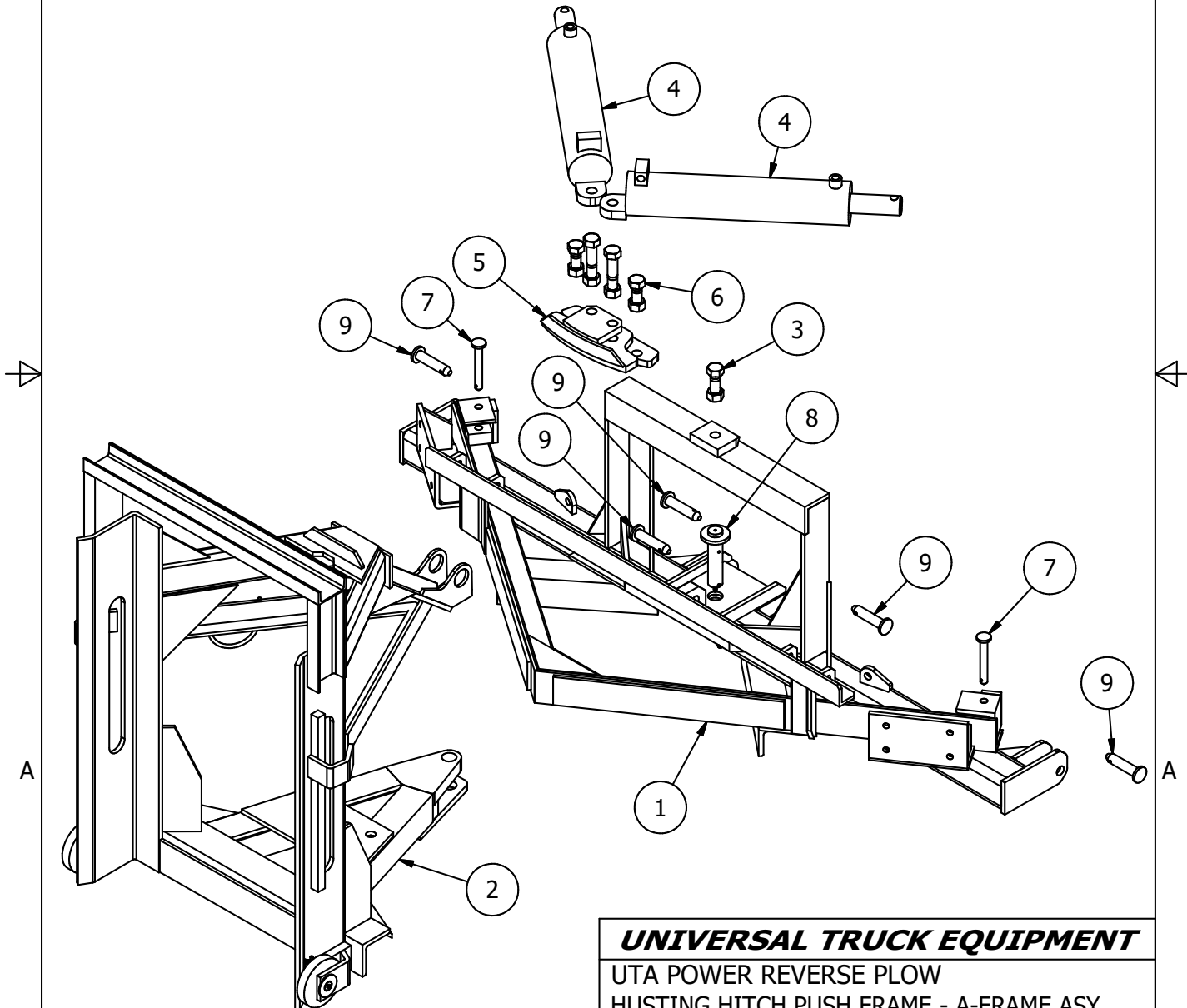
1

PARTS LIST

ITEM	QTY	PART NUMBER	DESCRIPTION
1	1	UTA-303HH	Push Frame Husting Hitch
2	1	UTA-304HH	A-Frame w/ Husting Hitch
3	1	UTA-305	Bridge Bolt & Nut
4	2	UTA-307	Swing Cylinder w/ DE Bolt & Nut
5	1	UTA-311	Trunion Assembly
6	1	UTA-310	Bolt Kit Assembly
7	2	U4013A	Pin $\varnothing 3/4$ "x5" w/ CP
8	1	U4014A	PIN $\varnothing 1-1/2$ "x6" w/ GREASE ZERK
9	5	U4002A	Pin $\varnothing 1$ "x3-5/8" w/ CP

B

B



A

A

UNIVERSAL TRUCK EQUIPMENT

UTA POWER REVERSE PLOW
 HUSTING HITCH PUSH FRAME - A-FRAME ASY.

PART NUMBER: UTA PLOW

DATE	DRAWN BY	REVISED	REV
08/20/21	RRH		

FILE NAME D:\DRAWINGS\UTA

2



1



2



1

PARTS LIST			
ITEM	QTY	PART NUMBER	DESCRIPTION
1	1	UTA-303HH-HD	Heavy Duty Push w/ Frame Husting Hitch
2	1	UTA-304HH	A-Frame w/ Husting Hitch
3	1	UTA-305	Bridge Bolt & Nut
4	2	UTA-307	Swing Cylinder w/ DE Bolt & Nut
5	1	UTA-311	Trunion Assembly
6	1	UTA-310	Bolt Kit Assembly
7	2	U-4013A	Pin $\varnothing 3/4$ "x5" w/ CP
8	1	U-4014A	PIN $\varnothing 1-1/2$ "x6" w/ GREASE ZERK
9	7	U-4002A	Pin $\varnothing 1$ "x3-5/8" w/ CP

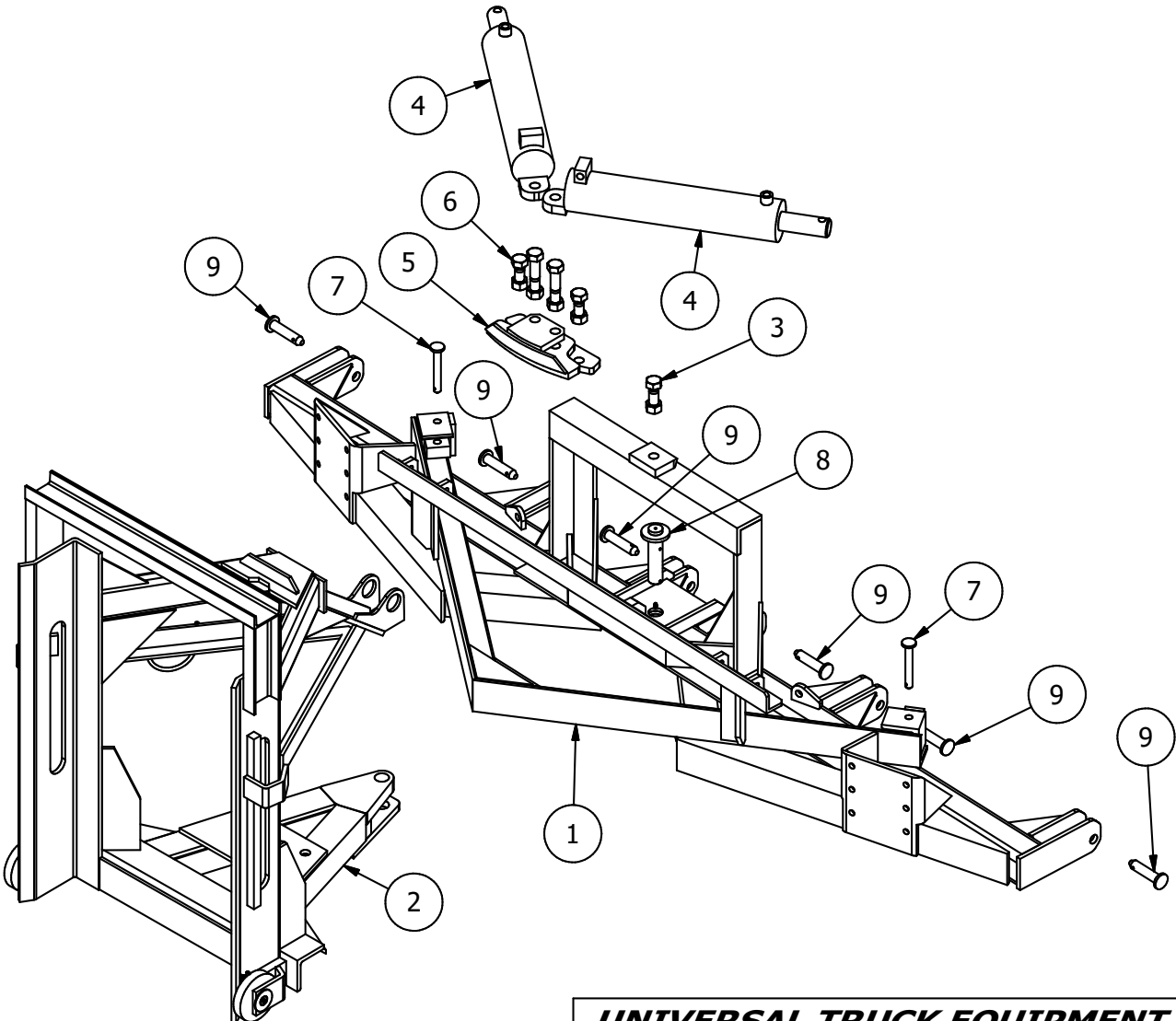
B

B



A

A



UNIVERSAL TRUCK EQUIPMENT

UTA POWER REVERSE PLOW
 HUSTING HITCH HD PUSHFRAME - A-FRAME ASY.
 PART NUMBER: UTA PLOW

DATE	DRAWN BY	REVISED	REV
08/20/21	RRH		

FILE NAME D:\DRAWINGS\UTA

2



1



2

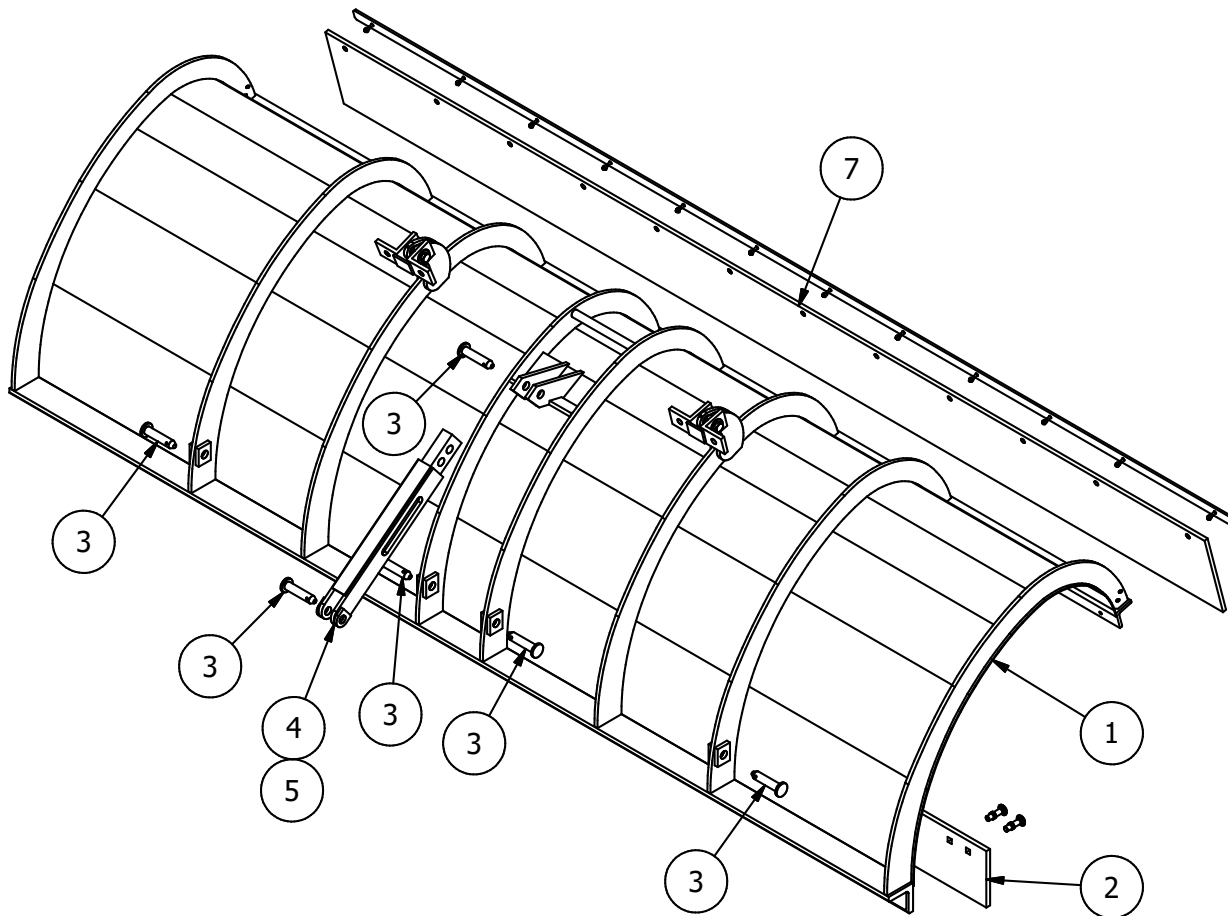
1

PARTS LIST

ITEM	QTY	PART NUMBER	DESCRIPTION
1	1		Moldboard Assembly (Specify model & Length)
2	1		Cutting Edge & Bolt Kit (Call for Options)
3	6	U4002A	Pin \varnothing 1"x3-5/8" w/ CP
4	1	UTA-301	Cannon Assembly
5	1	UTA-286	Solid Cannon Assembly (Available - Not Shown)
6	2	UTA-319	Pork Chop Assembly
7	1		Plow Flap w/ Steel Strip & Bolt Assembly (Specify Length)

B

B



A

A

UNIVERSAL TRUCK EQUIPMENT

UTA POWER REVERSE PLOW
MOLDBOARD PUSHFRAME ASSEMBLY

PART NUMBER: UTA PLOW

DATE	DRAWN BY	REVISED	REV
08/20/21	RRH		

FILE NAME D:\DRAWINGS\UTA

2

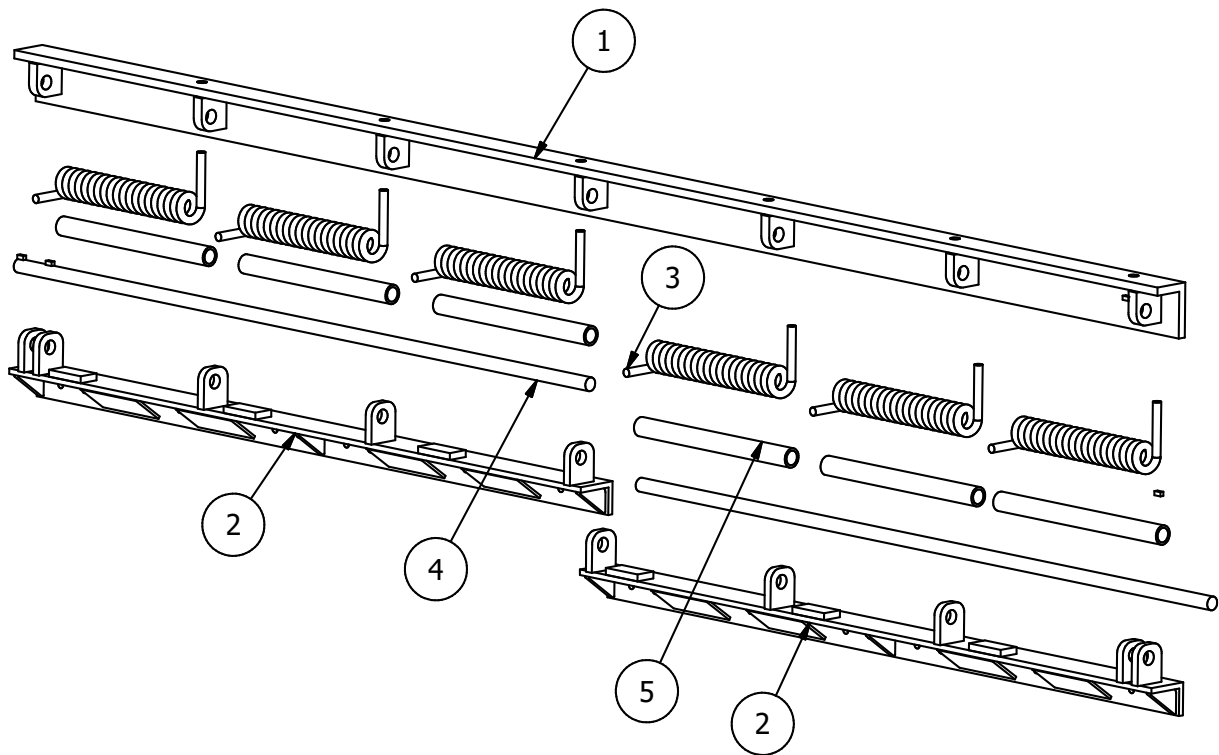
1



WARNING
 SPRING IN ASSEMBLY IS
 UNDER PRESSURE. DO NOT
 DISASSEMBLE. PLEASE CALL
 UNIVERSAL TRUCK EQUIPMENT
 (608)539-4600 TO DISASSEMBLE
 WARNING

PARTS LIST			
ITEM	QTY	PART NUMBER	DESCRIPTION
1	1	TE---	UPPER FROG
2	1	TE---	LOWER FROG
3	1	TE---	TRIP SPRING
4	2	TE---	TRIP EDGE PIN
5	2	TE---	TRIP EDGE PIPE

- PLEASE SPECIFY PLOW SERIAL NUMBER -
 TRIP EDGE SHOWN VARIES FROM MODEL & LENGTH



UNIVERSAL TRUCK EQUIPMENT

UTA POWER REVERSE PLOW
 TRIP EDGE ASSEMBLY

PART NUMBER: UTA PLOW

DATE	DRAWN BY	REVISED	REV
08/20/21	RRH		

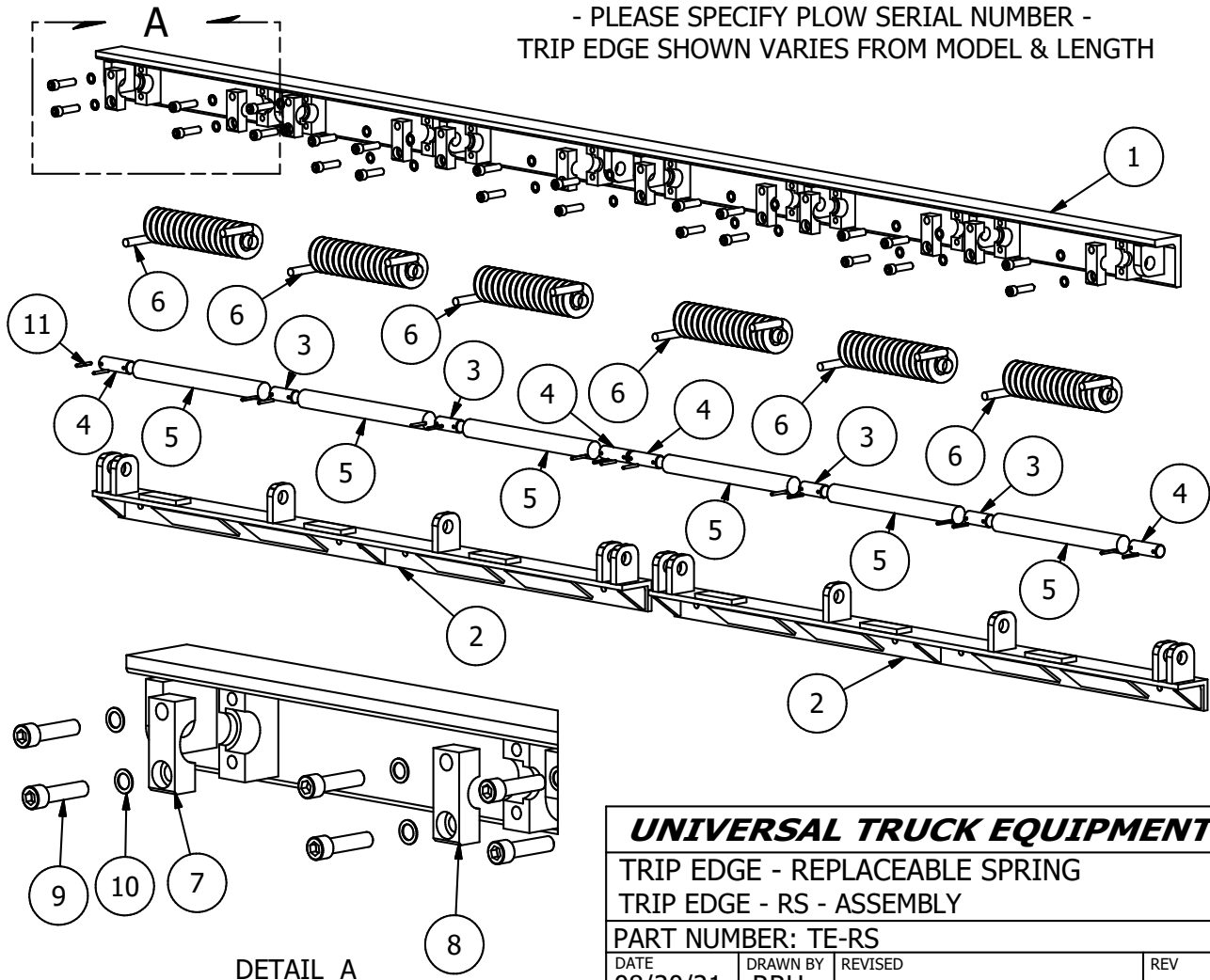
FILE NAME D:\DRAWINGS\UTA



*****WARNING*****
SERIOUS INJURY COULD OCCUR
 DO NOT LOOSEN BOLTS
 DO NOT DISASSEMBLE
 SPRING IN ASSEMBLY IS
 UNDER PRESSURE
 PLEASE CALL UNIVERSAL
 TRUCK EQUIPMENT
 (608)539-4600 TO DISASSEMBLE
*****WARNING*****

PARTS LIST			
ITEM	QTY	PART NUMBER	DESCRIPTION
1	1	TE-RS-UP	Upper Angle Assembly (Specify Length)
2	1	TE-RS-LOW	Lower Angle Assembly (Specify Thickness & Length)
3	4	TE-RS-PIN-125-3	Pin $\varnothing 1-1/4 \times 3$ "
4	4	TE-RS-PIN-125-375	Pin $\varnothing 1-1/4 \times 3-3/4$ "
5	6	TE-RS-PIN-175-17	Pin $\varnothing 1-3/4 \times 17$ "
6	6	TE-SPRING-BH500	Spring
7	6	TE-RS-LEMON-DROP-LH-CAP	Left Cap
8	6	TE-RS-LEMON-DROP-RH-CAP	Right Cap
9	24	---	Bolt $5/8 \times 2-1/2$ "
10	24	---	Nord-Lockwasher $5/8$ "
11	16	---	Spring Pin $1/4 \times 2$ "

- PLEASE SPECIFY PLOW SERIAL NUMBER -
 TRIP EDGE SHOWN VARIES FROM MODEL & LENGTH



UNIVERSAL TRUCK EQUIPMENT
 TRIP EDGE - REPLACEABLE SPRING
 TRIP EDGE - RS - ASSEMBLY
 PART NUMBER: TE-RS
 DATE 08/20/21 DRAWN BY RRH REVISED REV
 FILE NAME D:\DRAWINGS\TRIP EDGE



PARTS LIST			
ITEM	QTY	PART NUMBER	DESCRIPTION
1	1	U1200A	Complete STD. ADJ. Shoe Assembly (Includes #5,7-12)
2	1	U1200B	Complete Set of 2 Adj. Shoe Assemblies (STANDARD)
3	1	U1200C	Complete Set of 2 Adj. Shoe Assemblies (NI-HARD)
4	1	U1200E	Complete Ni-Hard Adj. Shoe Assemblies (Includes #6-12)
5	1	U1201A	Standard Shoe Pad w/ Bolts & Nuts
6	1	U1201B	Ni-Hard Shoe Pad w/ Bolts & Nuts
7	1	U1202	Ø1" Washer
8	1	U1203	Outer Slide Assembly
9	1	U1204	Inner Tube & Plate Assembly
10	1	U1205	Shoe Handle Assembly
11	1	U1206	Rebuild Kit (Includes Ø1" Rod w/ 2 Plain Nuts, Top Bolt & Nut)
12	1	U1207	Close Pin

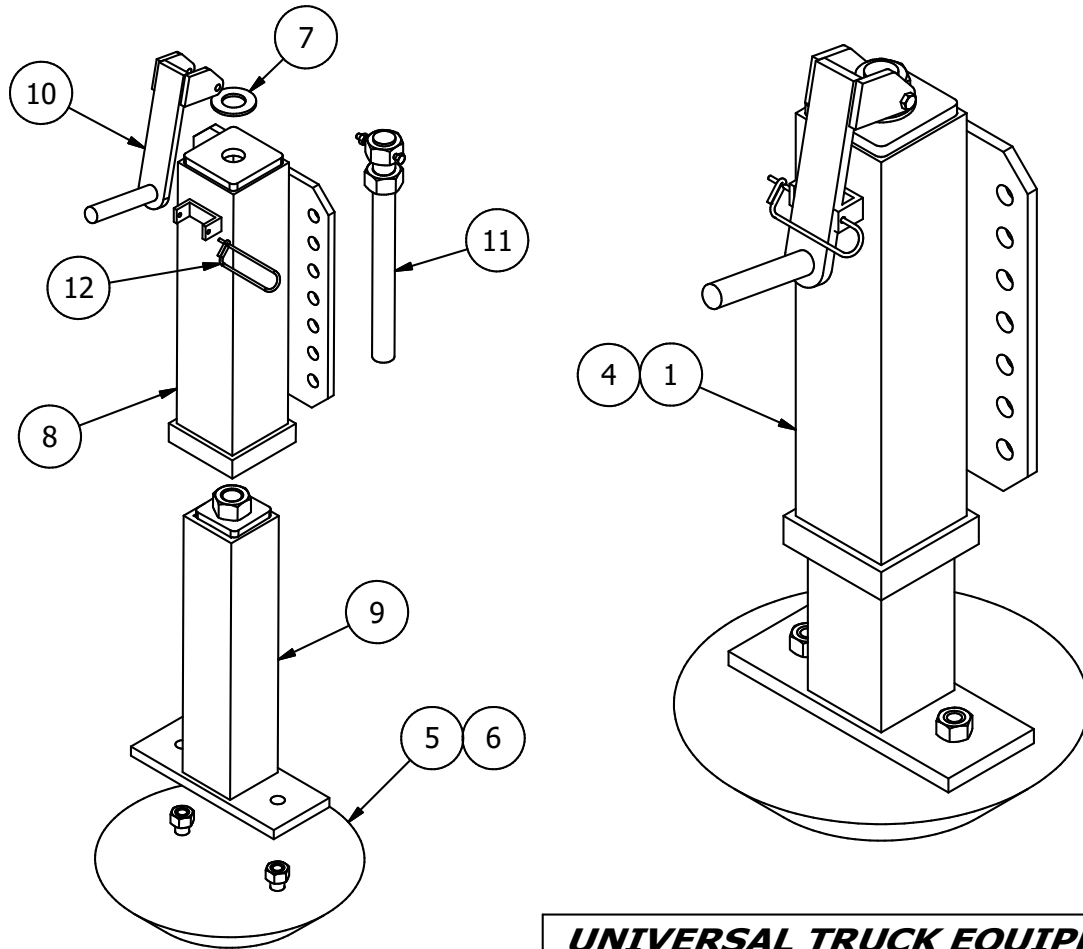
B

B



A

A



UNIVERSAL TRUCK EQUIPMENT			
UTA POWER REVERSE FLOW ADJUSTABLE SHOE ASSEMBLY			
PART NUMBER: UTA PLOW			
DATE	DRAWN BY	REVISED	REV
08/25/21	RRH		
FILE NAME D:\DRAWINGS\UTA			

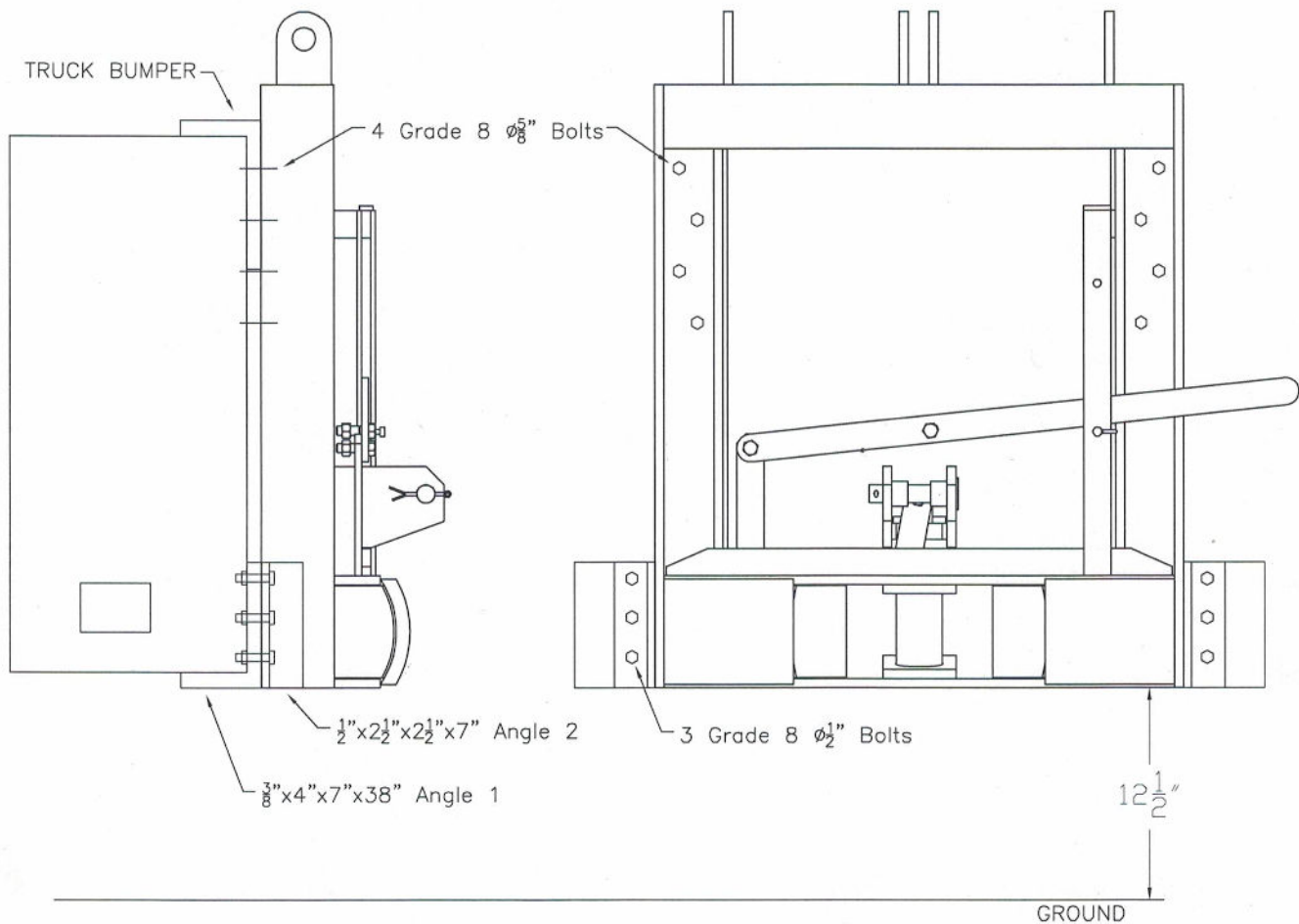
2



1



PLOW w/ BIG WING



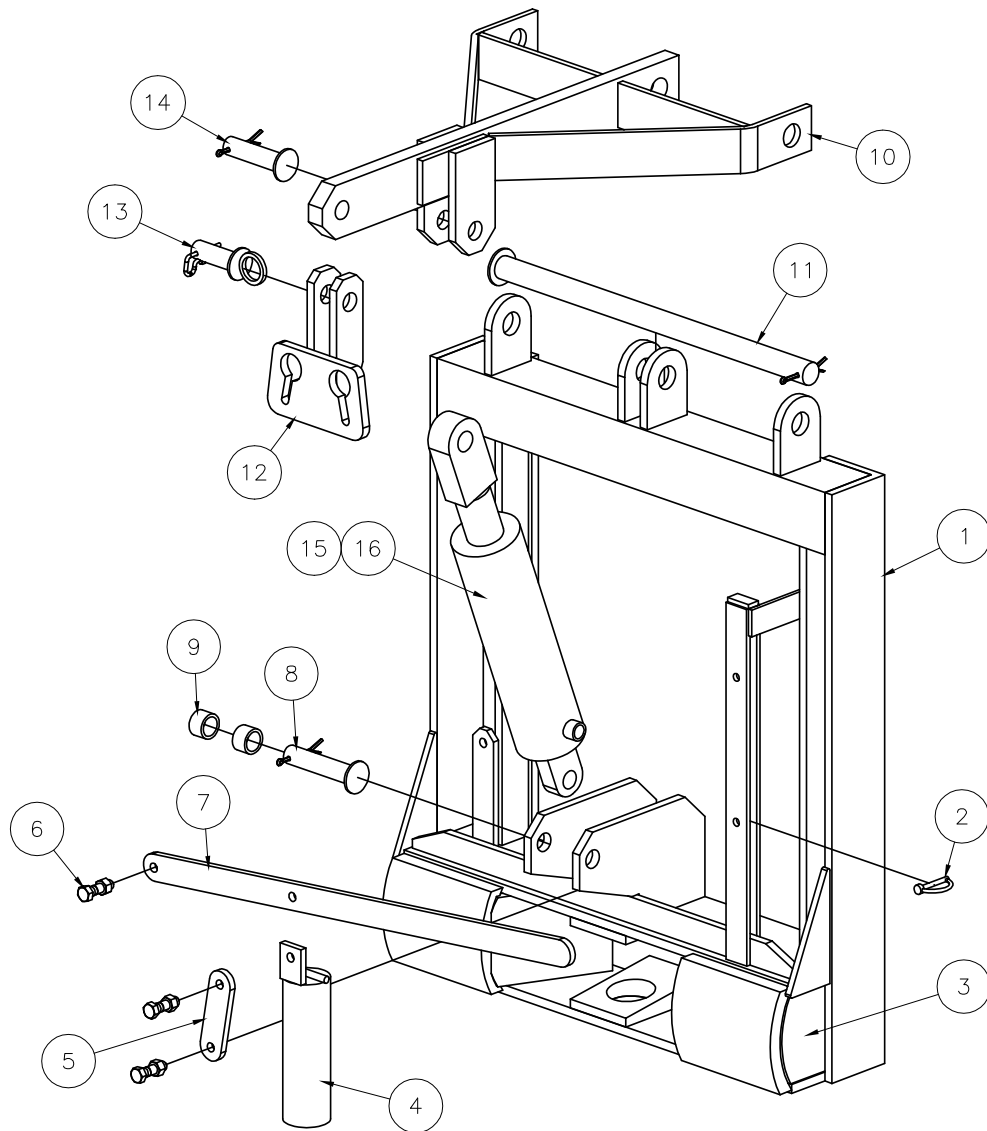
WELD ANGLE 1 TO
 WELD ANGLE 2 TO HITCH
 BOLT ANGLE 1 TO ANGLE 2

<i>UNIVERSAL TRUCK EQUIPMENT</i>			PIN & LOOP TRUCK PORTION	
Truck Portion Assembly – Parts Book –				
IN-HOUSE PART REFERENCE: PAL101			CONSUMER PARTS BOOK REF.: PAL101	
DATE 09/13/07	DRAWN BY RRH	SCALE N/A	REVISED	FILE NAME – D:\DRAWINGS\Plow Hitches\PNL\TRUCK PORTION\PAL101.dwg



PIN & LOOP TRUCK PORTION ASSEMBLY

Parts List			
ITEM	QTY	NAME	DESCRIPTION
1	1	PAL101	Hitch Assembly (Includes Items #2-14)
2	1	PAL102	Pin Handle Stop
3	1	PAL118	Lower Portion Assembly w/o Cylinder Ears
4	1	PAL104	∅2-1/2" Loop Pin
5	1	PAL105	Handle Link
6	3	PAL114	Bolt & Nut
7	1	PAL103	Handle
8	1	PAL106	∅1"x4-3/4" Dead End Cyl. Pin w/ CP
9	2	PAL107	Dead End Cyl. Bushing
10	1	PAL110	Lift Arm Assembly
11	1	PAL109	Lift Arm Pin w/ CP
12	1	PAL111	Chain Hanger Assembly
13	1	PAL112	Chain Adjuster Pin w/ Hair Pin Key
14	1	PAL113	∅1"x4" Live End Cyl. Pin w/ CP
15	1	PAL108	Single Acting Lift Cylinder
16	1	PAL108D	Double Acting Lift Cylinder



UNIVERSAL TRUCK EQUIPMENT

PIN & LOOP TRUCK PORTION

Truck Portion Assembly – Parts Book –

IN-HOUSE PART REFERENCE: N/A

CONSUMER PARTS BOOK REF.: N/A

DATE
07/18/07

DRAWN BY
RRH

SCALE
N/A

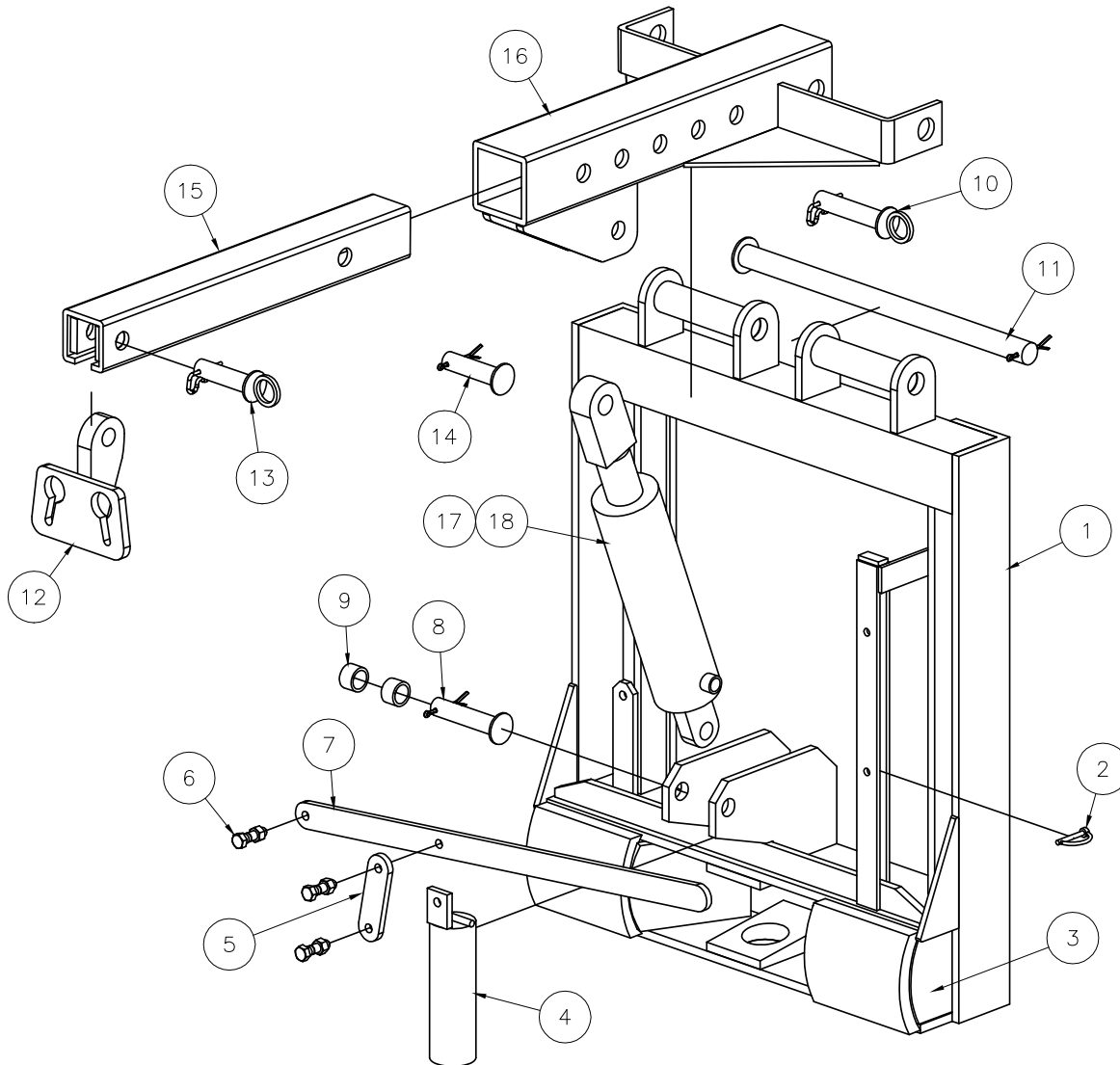
REVISED
05/01/13

FILE NAME – D:\DRAWINGS\Plow Hitches\PNL\TRUCK PORTION\PAL101.dwg



ADJUSTABLE PIN & LOOP TRUCK PORTION ASSEMBLY

Parts List			
ITEM	QTY	NAME	DESCRIPTION
1	1	PAL101EXT	Hitch Assembly (Includes Items #2-16)
2	1	PAL102	Pin Handle Stop
3	1	PAL118	Lower Portion Assembly w/o Cylinder Ears
4	1	PAL104	Ø2-1/2" Loop Pin
5	1	PAL105	Handle Link
6	3	PAL114	Bolt & Nut
7	1	PAL103	Handle
8	1	PAL106	Ø1"x4-3/4" Dead End Cyl. Pin w/ CP
9	2	PAL107	Dead End Cyl. Bushing
10	2	PAL116	Ø1"x5" Pin w/ Hair Pin Key
11	1	PAL109EXT	Lift Arm Pin w/ CP
12	1	PAL111EXT	Chain Hanger Assembly
13	1	PAL115	Chain Adjuster Pin w/ Hair Pin Key
14	1	PAL113	Ø1"x4" Live End Cyl. Pin w/ CP
15	1	PAL117	Inner Tube
16	1	PAL110EXT	Extendable Lift Arm Assembly
17	1	PAL108	Single Acting Lift Cylinder
18	1	PAL108D	Double Acting Lift Cylinder

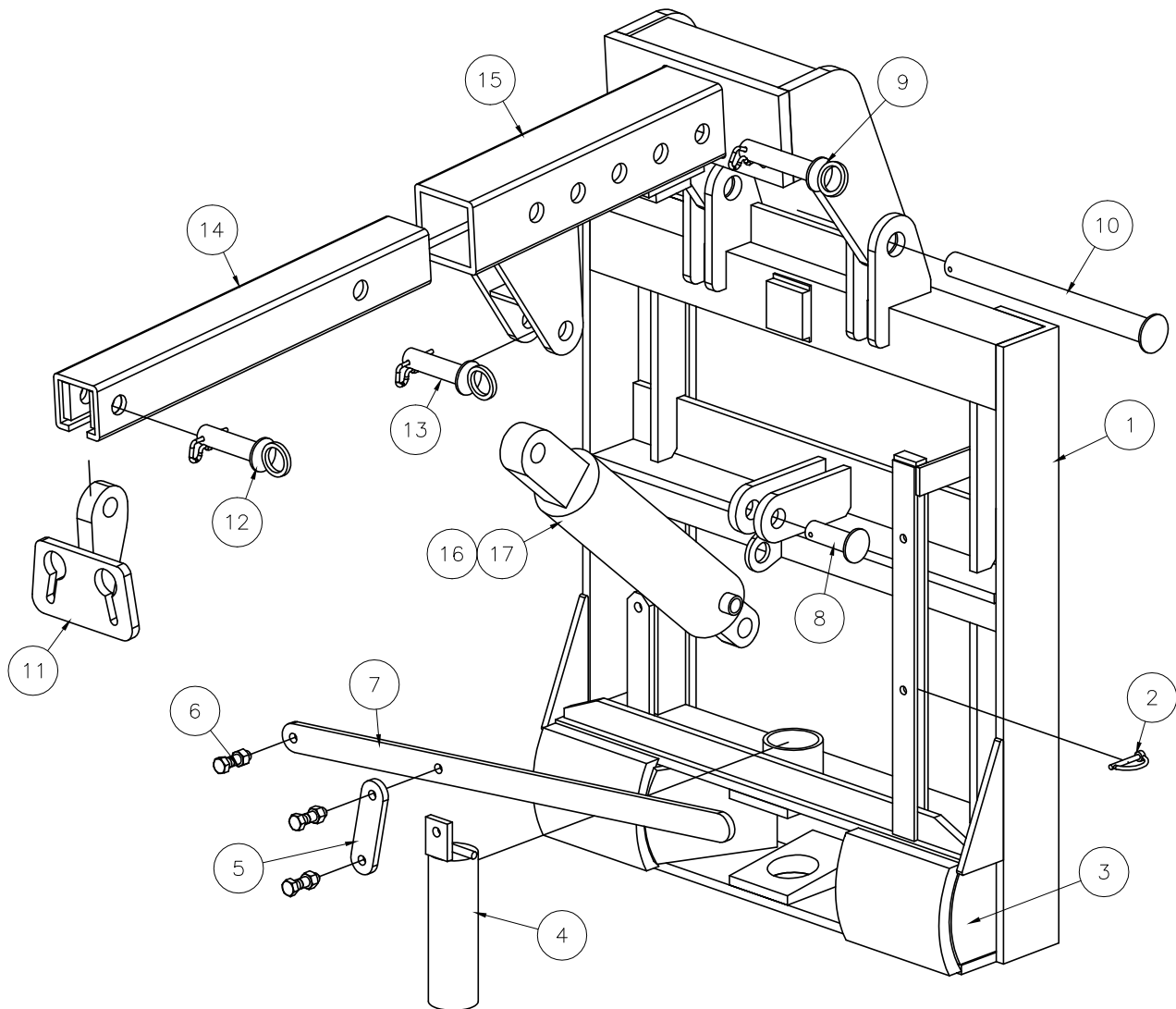


UNIVERSAL TRUCK EQUIPMENT			PIN & LOOP TRUCK PORTION		
Adjustable Truck Portion Assembly – Parts Book –					
IN-HOUSE PART REFERENCE: N/A			CONSUMER PARTS BOOK REF.: N/A		
DATE 07/24/07	DRAWN BY RRH	SCALE N/A	REVISED 05/01/13	FILE NAME – D:\DRAWINGS\Plow Hitches\P\N\TRUCK PORTION\PAL101EXT.dwg	



FOLDING ARM PIN & LOOP TRUCK PORTION ASSEMBLY

Parts List			
ITEM	QTY	NAME	DESCRIPTION
1	1	PAL101EXT-FOLD	Hitch Assembly (Includes Items #2-15)
2	1	PAL102	Pin Handle Stop
3	1	PAL118	Lower Portion Assembly w/o Cylinder Ears
4	1	PAL104	Ø2-1/2" Loop Pin
5	1	PAL105	Handle Link
6	3	PAL114	Bolt & Nut
7	1	PAL103	Handle
8	1	PAL106	Ø1"x4-3/4" Dead End Cyl. Pin w/ CP
9	2	PAL116	Ø1"x5" Pin w/ Hair Pin Key
10	1	PAL109EXT	Lift Arm Pin w/ CP
11	1	PAL111EXT	Chain Hanger Assembly
12	1	PAL115	Chain Adjuster Pin w/ Hair Pin Key
13	1	PAL113	Ø1"x4" Live End Cyl. Pin w/ CP
14	1	PAL117-FOLD	Inner Tube - FOLD
15	1	PAL180B	Top Arm Assembly
16	1	PAL108	Single Acting Lift Cylinder
17	1	PAL108D	Double Acting Lift Cylinder



UNIVERSAL TRUCK EQUIPMENT			FOLDING ARM - PIN & LOOP TRUCK PORTION		
Folding Arm - Truck Portion Assembly - Parts Book -					
IN-HOUSE PART REFERENCE: N/A			CONSUMER PARTS BOOK REF.: N/A		
DATE 09/29/14	DRAWN BY RRH	SCALE N/A	REVISED	FILE NAME - D:\DRAWINGS\Plow Hitches\PNL\TRUCK PORTION\PAL101EXT-FOLD.dwg	



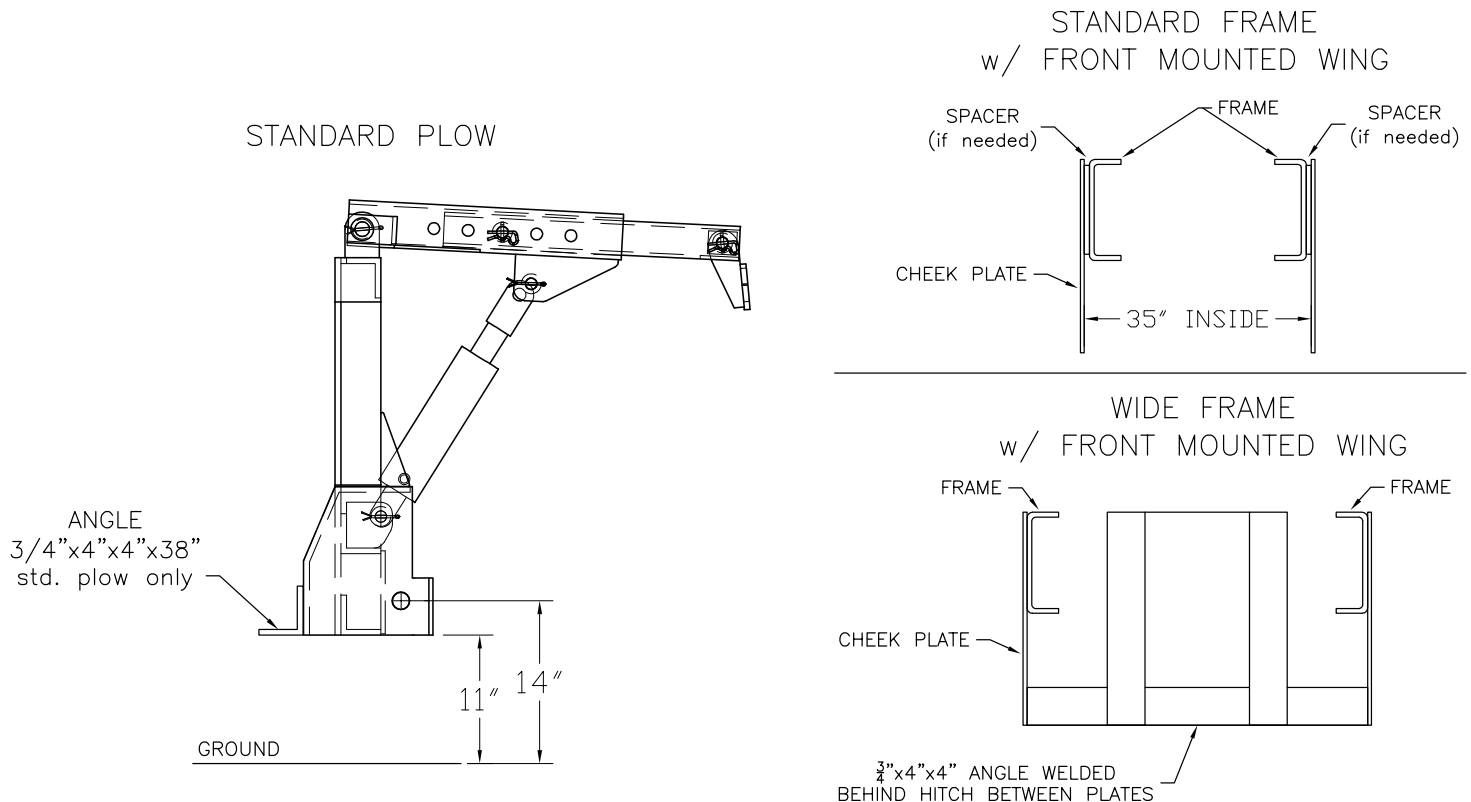
SNAP LINK MOUNTING INSTRUCTIONS

14" from ground to center of pin. Set jack stand at 11" and set outside of hitch pockets on stands to give you the 14" to center of pin. On a standard set up plow only bolt hitch to bumper with 4 or 5 $\frac{5}{8}$ " grade 8 bolts and weld a $\frac{3}{4}$ "x4"x38" angle iron to backside of hitch flush with bottom for a place to put S-Irons.

Mounting a SNAP Link on a truck with a big wing and std. frame 34" wide.

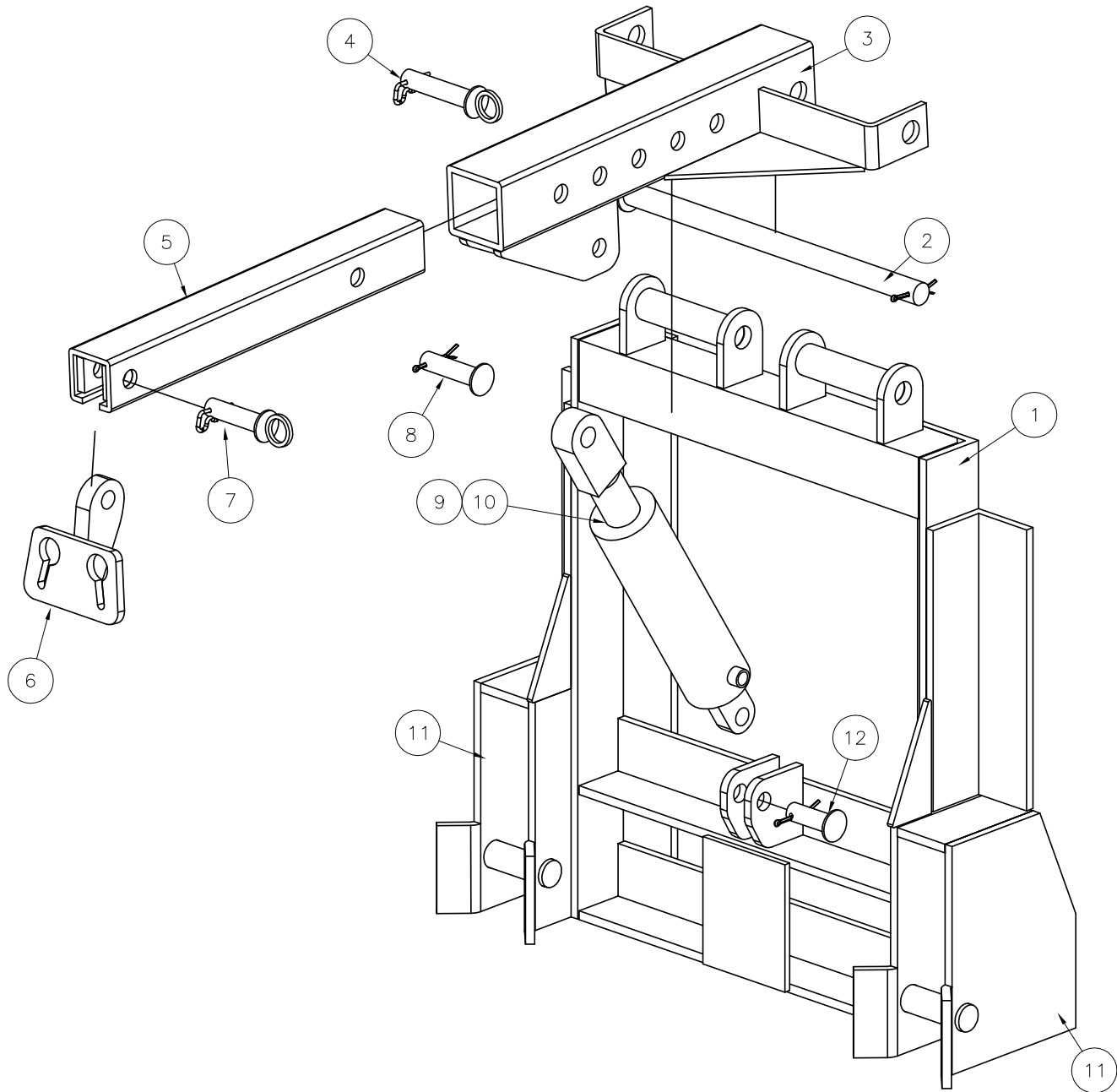
Spacers must be added between frame and cheek plate to reach 35" from inside of cheek plate to inside of cheek plate. Use 4 or 5 $\frac{5}{8}$ " grade 8 bolts to bolt to bumper and completely weld hitch pockets to cheek plates where the hitch slips inside of cheek plates.

On a wide frame truck no spacer between cheek plate and frame are needed the only thing different is a piece of $\frac{3}{4}$ "x4"x4" angle welded between cheek plates tight to back of hitch. Welded on all 4 sides and then a gusset is added between cheek plate and outside pocket gusset is made out of $\frac{1}{2}$ " cut to fit. Weld all sides.



SNAP LINK HITCH TRUCK PORTION ASSEMBLY

Parts List			
ITEM	QTY	NAME	DESCRIPTION
1	1	SNAP200	Hitch Assembly (Cylinder NOT Included)
2	1	SNAP201	Lift Arm Pin w/ CP
3	1	SNAP202	Extendable Lift Arm Assembly
4	1	SNAP203	ø1"x5" Pin w/ Hair Pin Key
5	1	SNAP204	Inner Tube
6	1	SNAP205	Chain Hanger Assembly
7	1	SNAP206	ø1"x4" Pin w/ Hair Pin Key
8	2	SNAP207	ø1"x4" Cyl. Pin w/ CP
9	1	PAL108	Single Acting Lift Cylinder
10	1	PAL108D	Double Acting Lift Cylinder
11	2	SNAP136	Pocket Only (Side Plates, Back, Ears & Pin)
12	1	SNAP208	ø1" x 3" Pin w/ CP



UNIVERSAL TRUCK EQUIPMENT

SNAP LINK HITCH TRUCK PORTION

Adjustable Truck Portion Assembly – Parts Book –

IN-HOUSE PART REFERENCE: N/A

CONSUMER PARTS BOOK REF.: N/A

DATE
07/26/07

DRAWN BY
RRH

SCALE
N/A

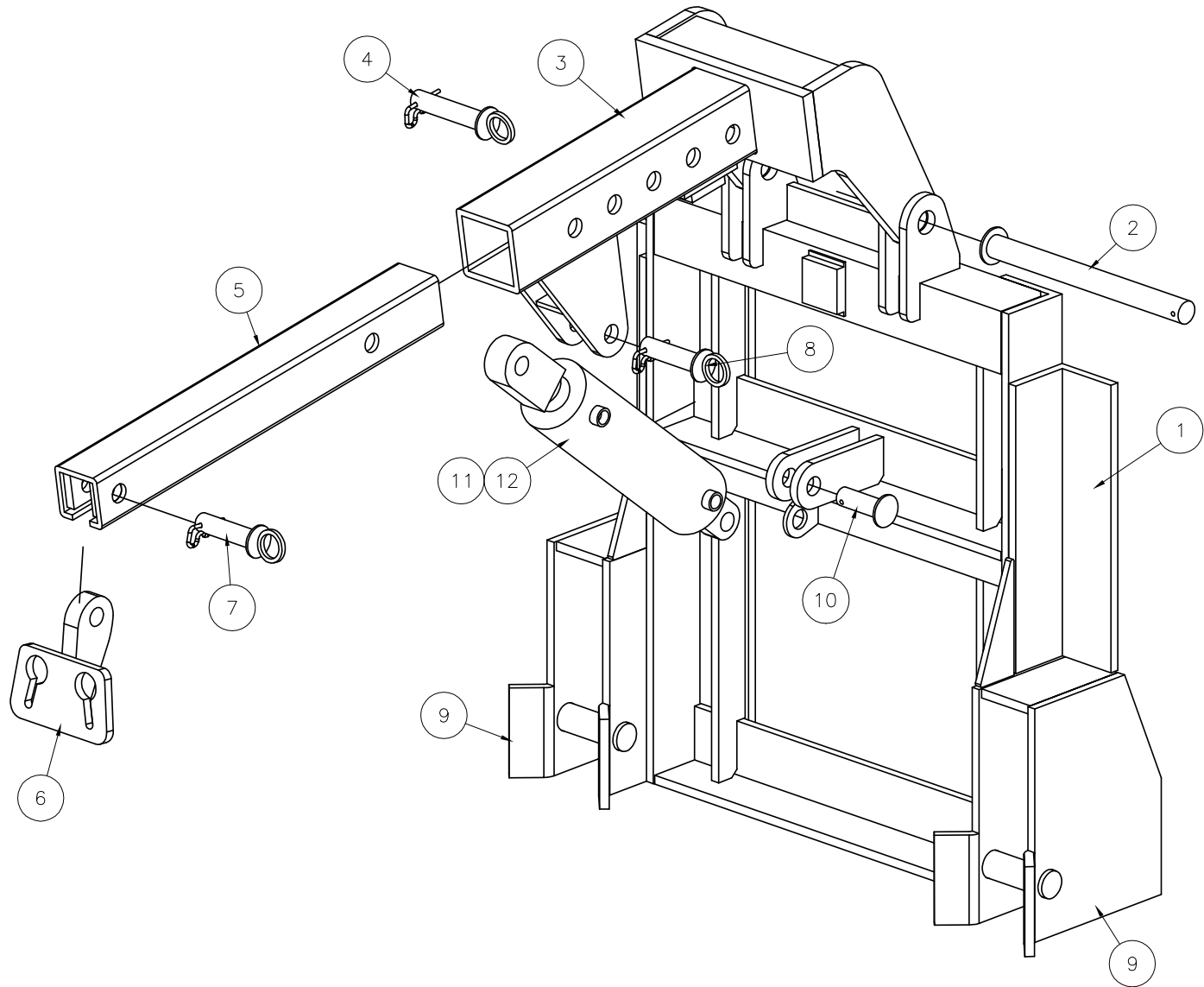
REVISED
05/01/13

FILE NAME – D:\DRAWINGS\Plow Hitches\SnapLink\TRUCKPORTION\SNAP200.dwg



FOLDING ARM SNAP LINK HITCH TRUCK PORTION ASSEMBLY

Parts List			
ITEM	QTY	NAME	DESCRIPTION
1	1	SNAP200-FOLD	Hitch Assembly (Includes Items #2-10)
2	1	SNAP201	Lift Arm Pin w/ CP
3	1	PAL180B	Top Arm Assembly
4	1	SNAP203	Ø1"x5" Pin w/ Hair Pin Key
5	1	SNAP204	Inner Tube
6	1	SNAP205	Chain Hanger Assembly
7	1	SNAP206	Ø1"x4" Pin w/ Hair Pin Key
8	2	SNAP207	Ø1"x4" Cyl. Pin w/ CP
9	2	SNAP136	Pocket Only (Side Plates, Back, Ears & Pin)
10	1	SNAP208	Ø1" x 3" Pin w/ CP
11	1	PAL108	Single Acting Lift Cylinder
12	1	PAL108D	Double Acting Lift Cylinder



UNIVERSAL TRUCK EQUIPMENT		FOLDING ARM – SNAP LINK HITCH TRUCK PORTION	
Folding Arm – Truck Portion Assembly – Parts Book –			
IN-HOUSE PART REFERENCE: N/A		CONSUMER PARTS BOOK REF.: N/A	
DATE 09/29/14	DRAWN BY RRH	SCALE N/A	REVISED
FILE NAME – D:\DRAWINGS\Plow Hitches\SnapLink\TRUCK PORTION\SNAP200-FOLD.dwg			



2



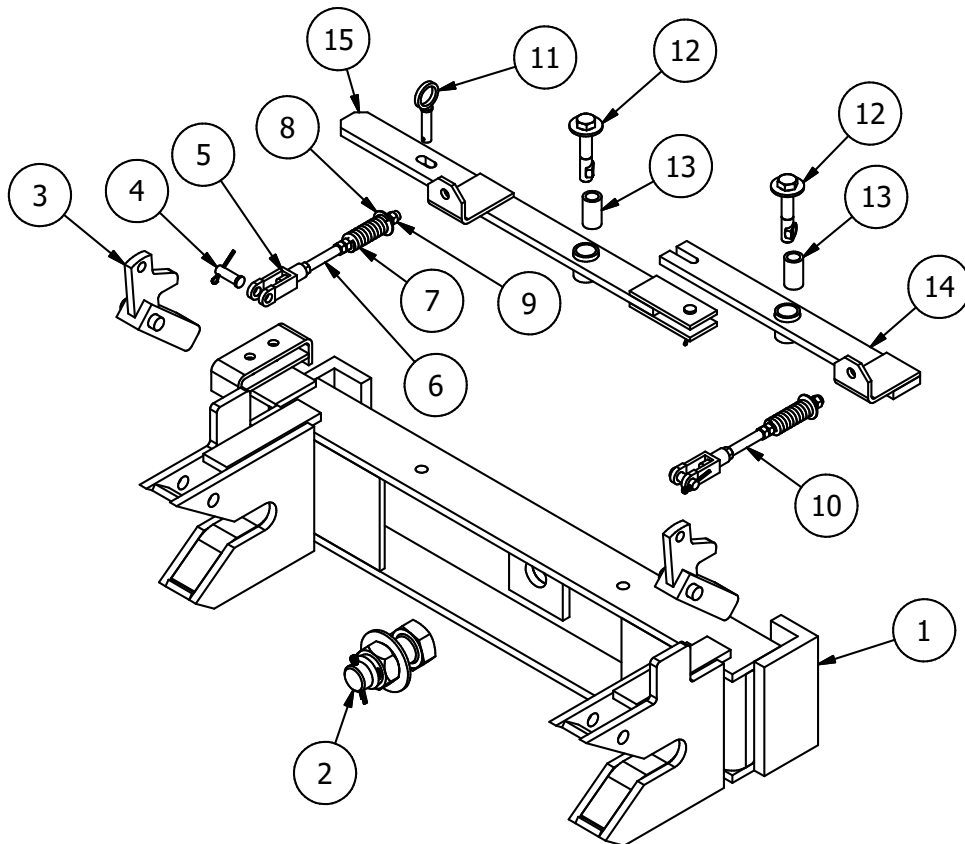
1

PARTS LIST

ITEM	QTY	PART NUMBER	DESCRIPTION
1	1	SNAP-100	Hitch Assembly (Includes #2-15)
2	1	SNAP-134A	Pivot Bolt Assembly
3	2	SNAP-139	Locking Ear Assembly
4	2	SNAP-122	Clevis Pin w/ CP Assembly
5	1	SNAP-125	Adjustable Yoke End
6	1	SNAP-126	Threaded Rod
7	1	SNAP-127	Spring
8	1	SNAP-137	Washer
9	5	SNAP-138	Nut $\varnothing 1/2"$
10	2	SNAP-128	Complete Yoke Assembly (#4-9)
11	1	SNAP-135	Lock Pin $\varnothing 1/2" \times 2"$ w/ Hitch Pin Clip
12	2	SNAP-120	Bolt Assembly
13	2	SNAP-119	Bushing $\varnothing 1"$ OD x $\varnothing 11/16"$ ID
14	1	SNAP-123	Right Arm Assembly
15	1	SNAP-124	Left Arm Assembly

B

B



A

A

UNIVERSAL TRUCK EQUIPMENT

UTA POWER REVERSE PLOW
 SNAP LINK HITCH PLOW PORTION

PART NUMBER: SNAP-100

DATE	DRAWN BY	REVISED	REV
08/24/21	RRH		

FILE NAME D:\DRAWINGS\UTA

2



1



2



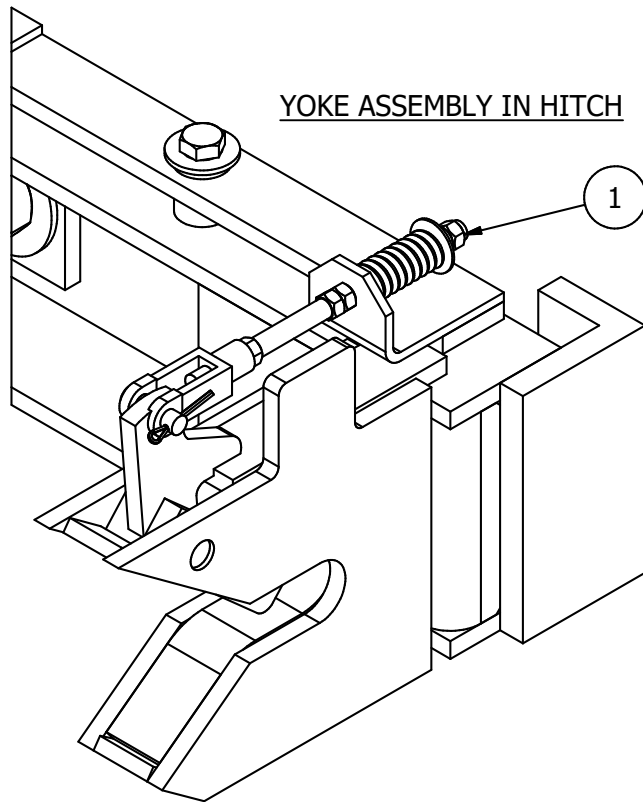
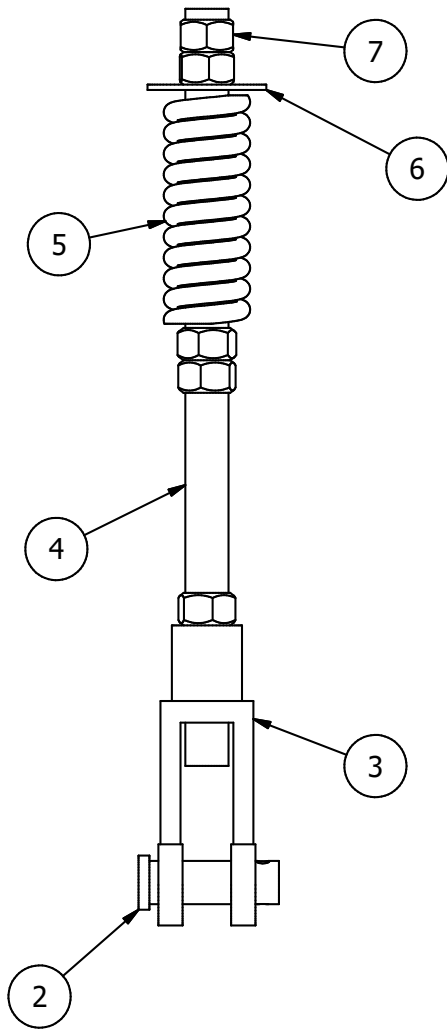
1

PARTS LIST

ITEM	QTY	PART NUMBER	DESCRIPTION
1	2	SNAP-128	Complete Yoke Assembly (INCLUDES #2-7)
2	1	SNAP-125	Adjustable Yoke End
3	1	SNAP-122	Yoke Clevis Pin w/ CP
4	1	SNAP-126	Threaded Rod
5	1	SNAP-127	Spring
6	1	SNAP-137	Washer
7	5	SNAP-138	Nut $\varnothing 1/2"$

B

B



A

A

UNIVERSAL TRUCK EQUIPMENT

UTA POWER REVERSE PLOW
 PLOW PORTION ASSEMBLY

PART NUMBER: SNAP-100

DATE	DRAWN BY	REVISED	REV
08/24/21	RRH		

FILE NAME D:\DRAWINGS\UTA

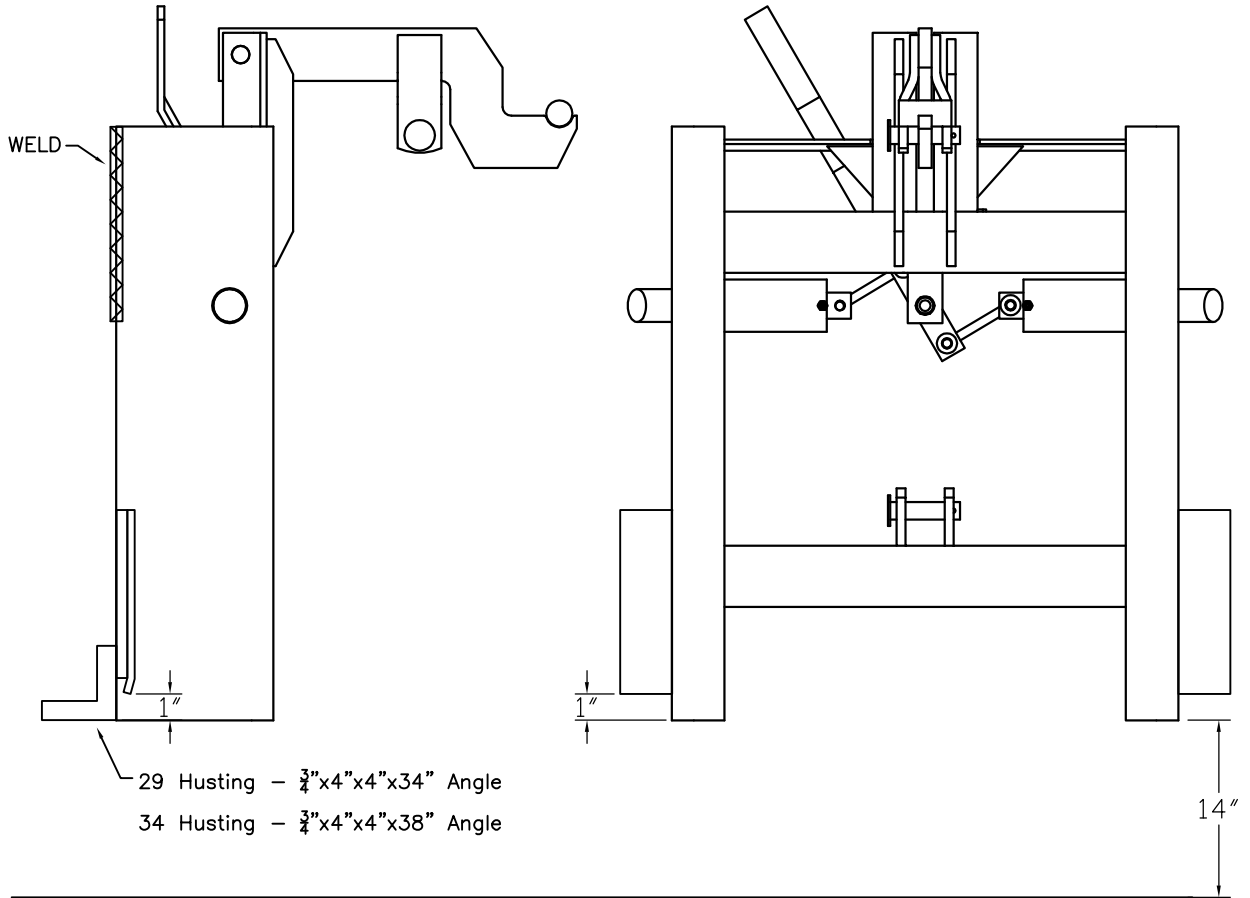
2



1



HUSTING HITCH TRUCK PORTION ASSEMBLY



HITCH IS MOUNTED 14" FROM THE GROUND

ROLLER KIT IS MOUNTED 1" UP ON THE HITCH

UNIVERSAL TRUCK EQUIPMENT			Husting Hitch	
Husting Hitch - Truck Portion Assembly - Parts Book -				
IN-HOUSE PART REFERENCE:			CONSUMER PARTS BOOK REF.:	
DATE 05/10/10	DRAWN BY RRH	SCALE N/A	REVISED	FILE NAME - D:\DRAWINGS\Plow Hitches\Husting\Truck Portion\29\29HH-200.dwg



2



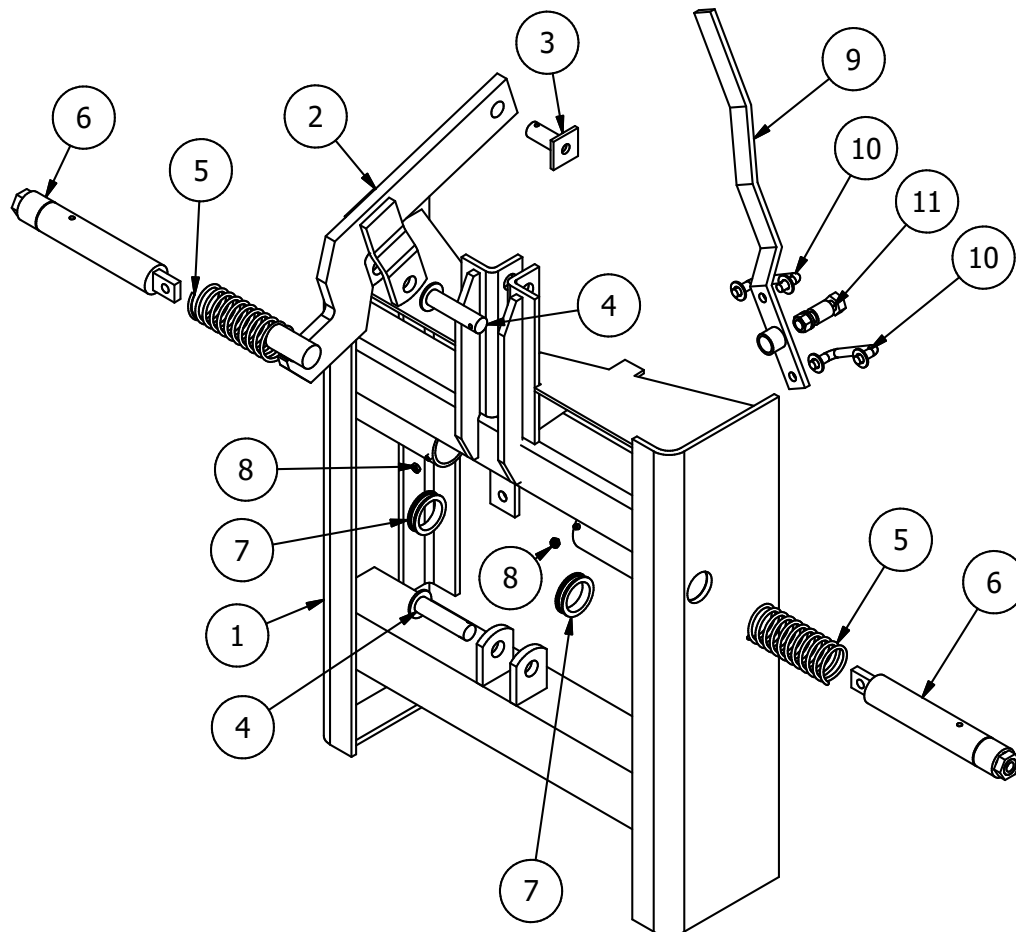
1

PARTS LIST

ITEM	QTY	PART NUMBER	DESCRIPTION
1	1	29HH-202	Husting Hitch Assembly 29"/34" - Specify Width
2	1	29HH-224	Lift Arm Assembly
3	1	29HH-223	Lift Arm Pin $\varnothing 1"$
4	2	29HH-208	Pin $\varnothing 1"x4"$ w/ (2) CP
5	2	29HH-222	Spring
6	2	29HH-221	Latch Pin Assembly
7	2	29HH-211	Retainer for Spring
8	4	----	Set Screw
9	1	29HH-217	Handle (29"/34") - Specify Length
10	2	29HH-218	Connector Link (29"/34") - Specify Length
11	1	29HH-230A	Bolt Assembly

B

B



A

A

UNIVERSAL TRUCK EQUIPMENT

UTA POWER REVERSE PLOW
TRUCK HITCH ASSEMBLY

PART NUMBER: HUSTING HITCH

DATE

08/23/21

DRAWN BY

RRH

REVISED

REV

FILE NAME D:\DRAWINGS\UTA

2



1



2

1

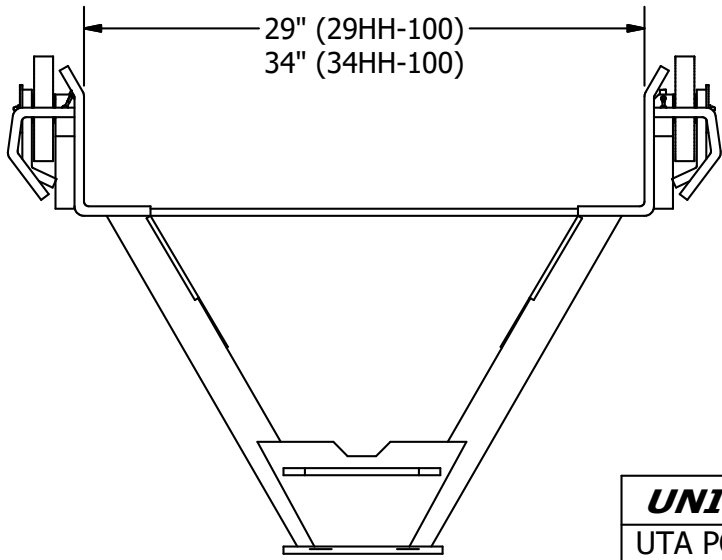
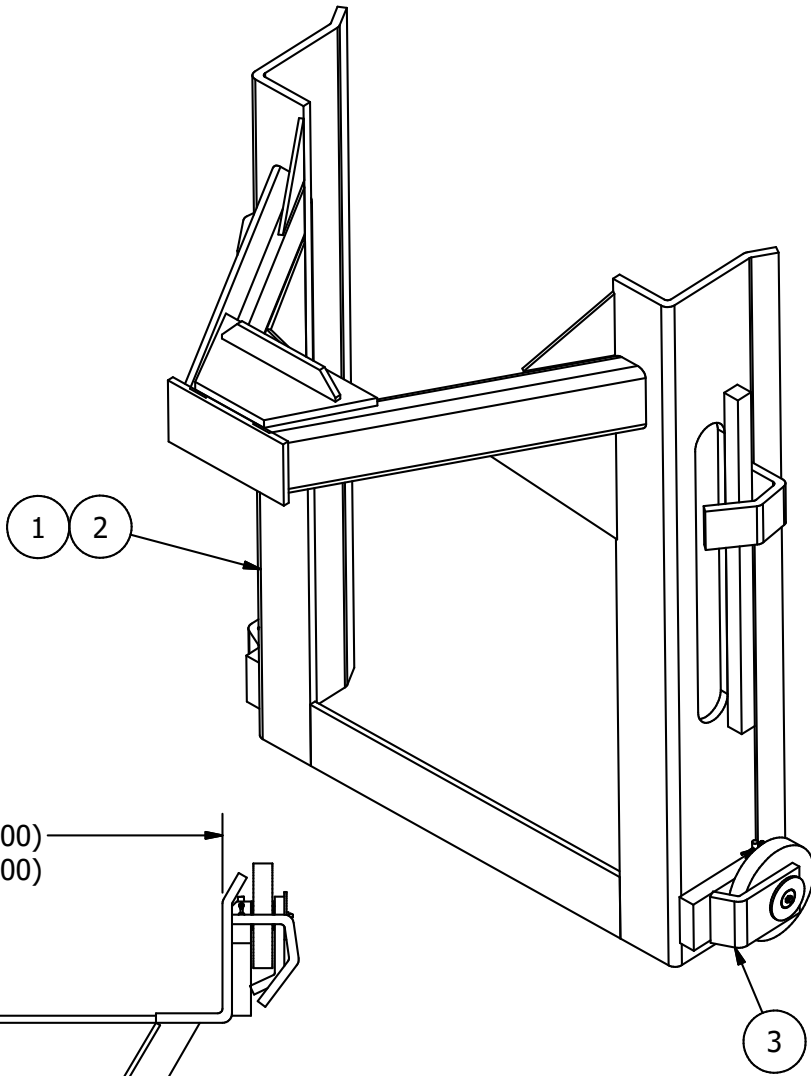


PARTS LIST

ITEM	QTY	PART NUMBER	DESCRIPTION
1	1	29HH-100	29" Husting Hitch Assembly
2	1	34HH-100	34" Husting Hitch Assembly
3	1	U1094	Roller Kit (Optional)

B

B



A

A

UNIVERSAL TRUCK EQUIPMENT

UTA POWER REVERSE PLOW
PLOW PORTION HITCH ASSEMBLY

PART NUMBER: UTA PLOW

DATE	DRAWN BY	REVISED	REV
08/23/21	RRH		

FILE NAME D:\DRAWINGS\UTA

2

1



2



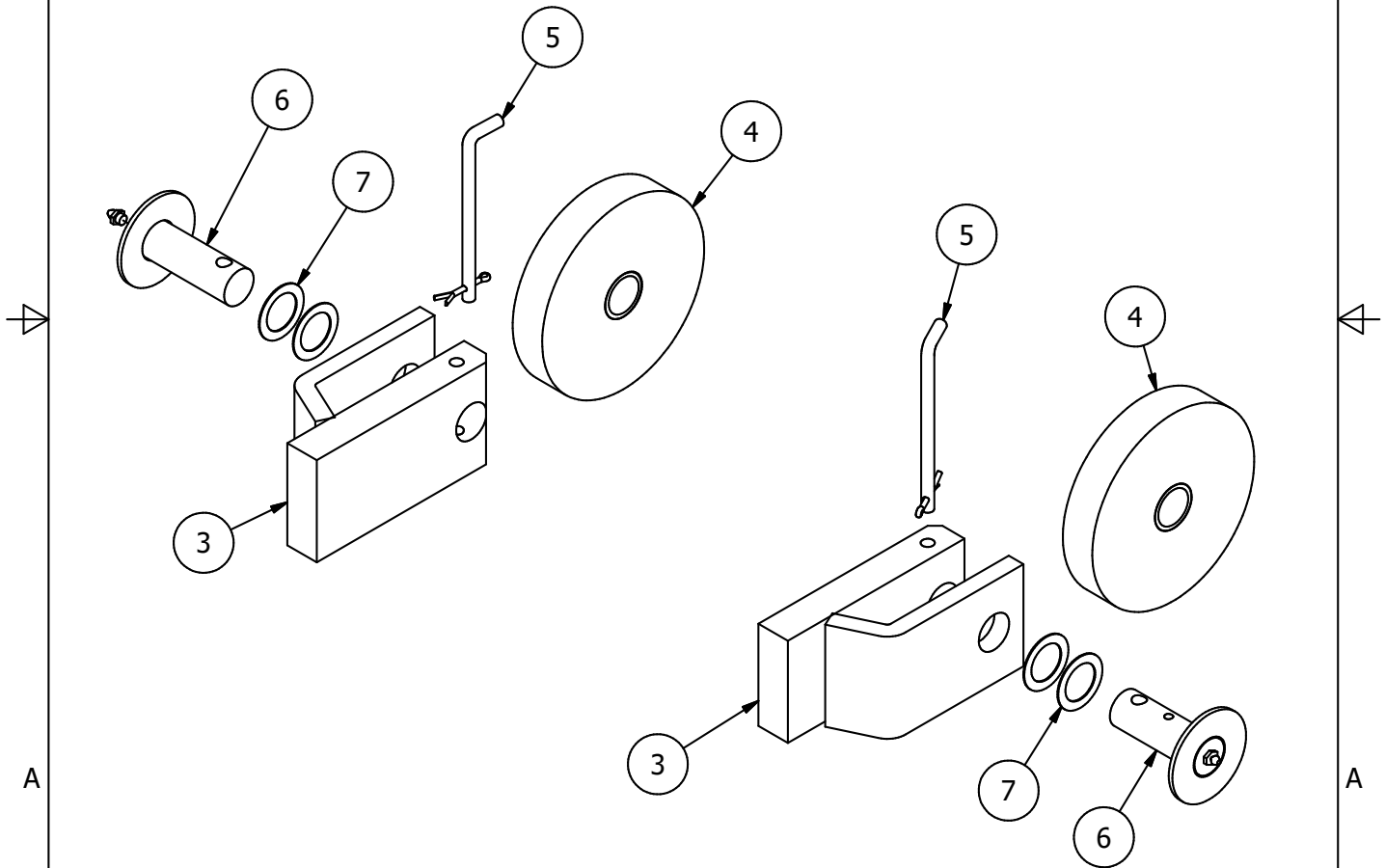
1

PARTS LIST

ITEM	QTY	PART NUMBER	DESCRIPTION
1	1	KAM9593	Roller Assembly RH (Items 3-7)
2	1	KAM9594	Roller Assembly LH (Items 3-7)
3	1	KAM9588	Roller Wheel Retainer Assembly
4	1	KAM9592	Roller Wheel w/ Bushing (U3009)
5	1	KAM2084	Pin for Axle
6	1	KAM9587	Axle Assembly w/ Grease Zerk
7	2	KAM2536	Bushing/Spacer
8	1	KAM9595	Roller Pad LH (Not Shown)
9	1	KAM9596	Roller Pad RH (Not Shown)

B

B



A

A

UNIVERSAL TRUCK EQUIPMENT

UTA POWER REVERSE PLOW
ROLLER KIT ASSEMBLY

PART NUMBER: UTA PLOW

DATE	DRAWN BY	REVISED	REV
08/23/21	RRH		

FILE NAME D:\DRAWINGS\UTA

2



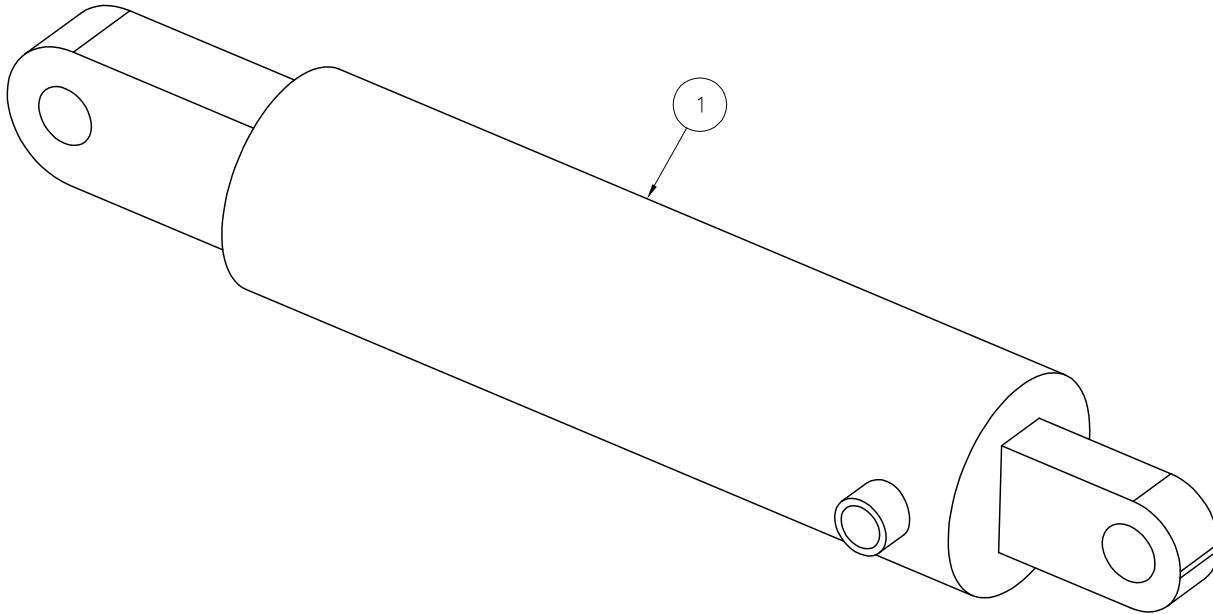
1



SINGLE ACTING LIFT CYLINDER

Parts List			
ITEM	QTY	NAME	DESCRIPTION
1	1	PAL108	Single Acting Lift Cyl.
2	1	PAL108SK	Seal Kit (Not Shown)

NOTE: CUSTOMER REPLACING CYLINDER PARTS
VOIDS CYLINDER WARRANTY.



<i>UNIVERSAL TRUCK EQUIPMENT</i>		PIN & LOOP TRUCK PORTION	
SINGLE ACTING LIFT CYLINDER			
IN-HOUSE PART REFERENCE: PAL108		CONSUMER PARTS BOOK REF.: PAL108	
DATE 07/18/07	DRAWN BY RRH	SCALE N/A	REVISED FILE NAME - D:\DRAWINGS\Plow Hitches\PNL\TRUCK PORTION\PAL108.dwg

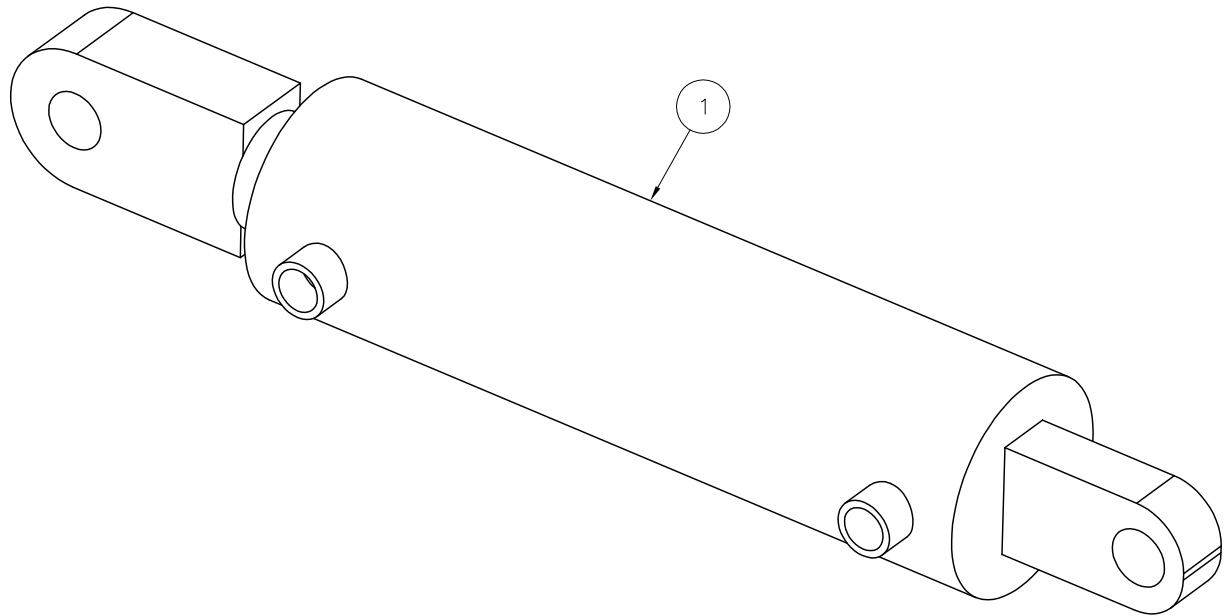


DOUBLE ACTING LIFT CYLINDER

Parts List

ITEM	QTY	NAME	DESCRIPTION
1	1	PAL108D	Double Acting Lift Cyl.
2	1	PAL108DSK	Seal Kit (Not Shown)

NOTE: CUSTOMER REPLACING CYLINDER PARTS
VOIDS CYLINDER WARRANTY.



<i>UNIVERSAL TRUCK EQUIPMENT</i>		PIN & LOOP TRUCK PORTION		
DOUBLE ACTING LIFT CYLINDER				
IN-HOUSE PART REFERENCE: PAL108D			CONSUMER PARTS BOOK REF.: PAL108D	
DATE 07/18/07	DRAWN BY RRH	SCALE N/A	REVISED	FILE NAME - D:\DRAWINGS\Plow Hitches\PNL\TRUCK PORTION\PAL108D.dwg





Universal Truck Equipment, Inc.

Hwy 54/93 - N15921 Schubert Rd Galesville, WI 54630

Phone 608-539-4600 / Fax 608-539-4800

www.universaltruckequipment.com